

ISA SERVER CONFIGURATION

Step 1: Start ISA Management application (Start -> Programs -> Microsoft ISA Server -> ISA Management)

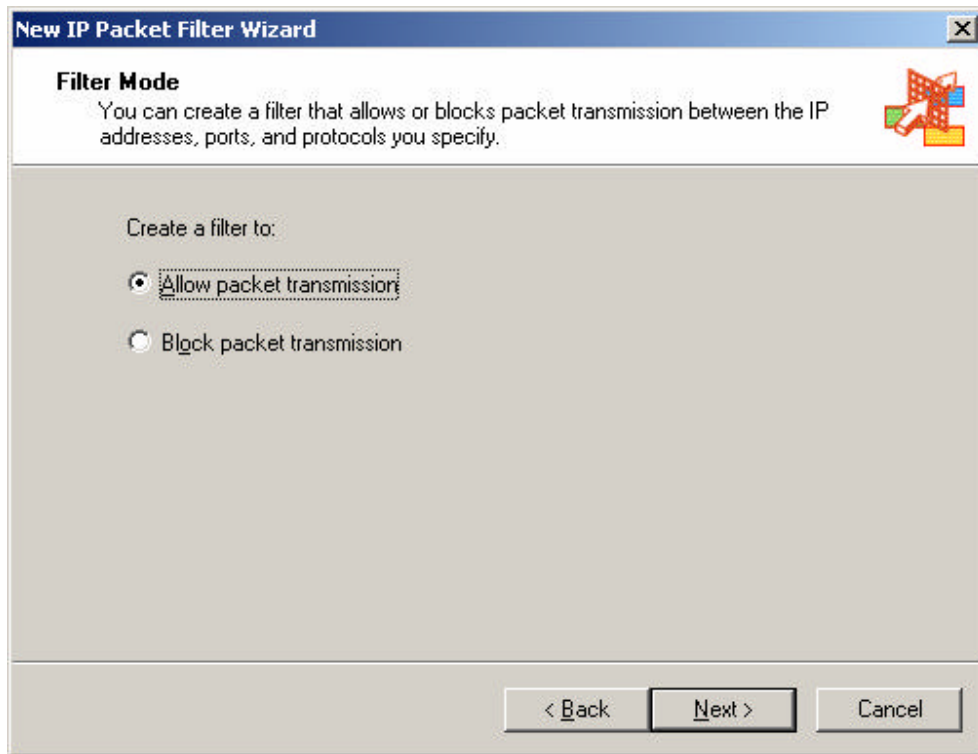
Step 2: Select IP Packet Filters (Internet Security and Acceleration Server -> Servers and Arrays -> {MachineName} -> Access Policy -> IP Packet Filters)

Step 3: Right Click on "IP Packet Filters" and select "New" (New -> Filter)

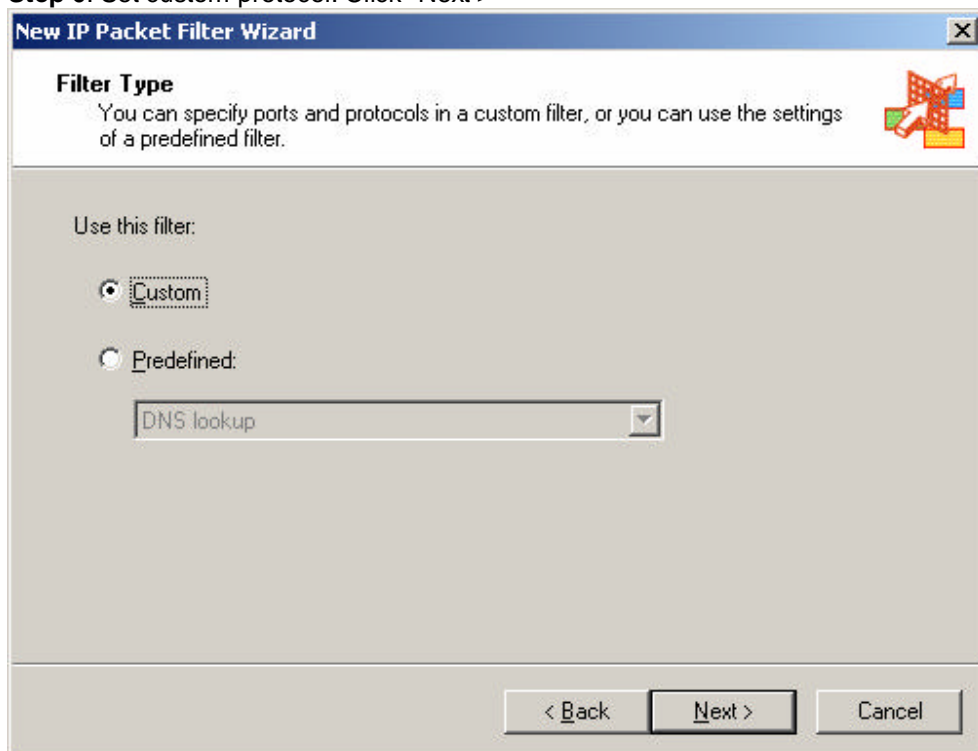
Step 4: Name the packet filter "ASIC Prod". Click "Next >"



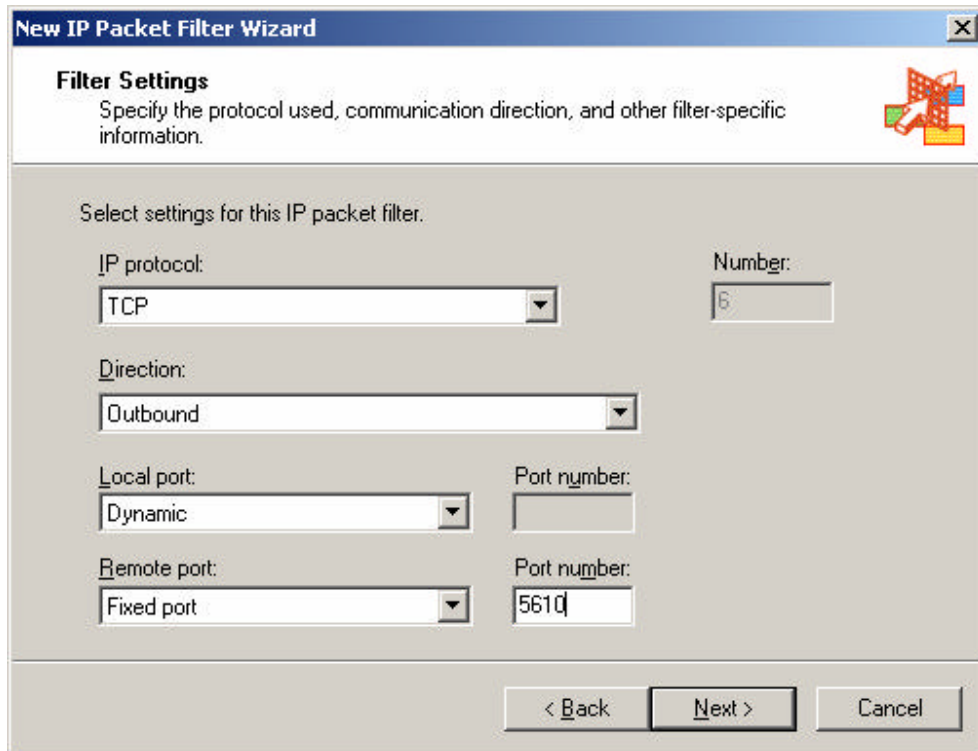
Step 5: Allow packet transmission. Click "Next >"



Step 6: Set custom protocol. Click "Next >"



Step 7: Set Filter to TCP / Outbound / (Local) Dynamic / (Remote) Fixed Port / 5610 . Click "Next >"



New IP Packet Filter Wizard

Filter Settings
Specify the protocol used, communication direction, and other filter-specific information.

Select settings for this IP packet filter.

IP protocol: TCP Number: 6

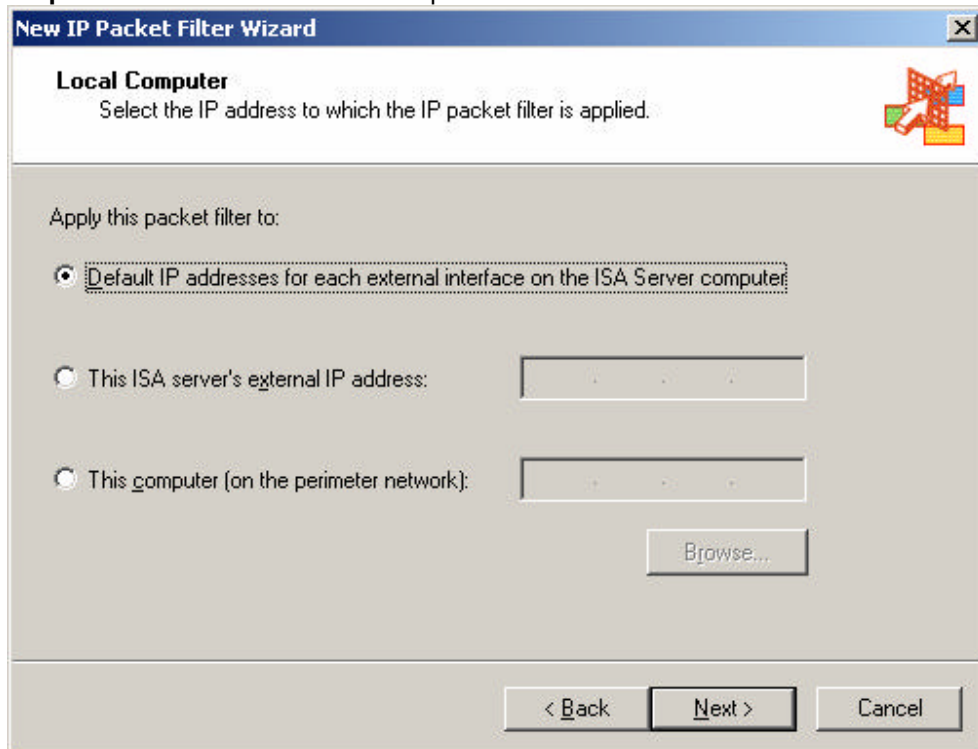
Direction: Outbound

Local port: Dynamic Port number:

Remote port: Fixed port Port number: 5610

< Back Next > Cancel

Step 8: Default to all IP on local computers. Click "Next >"



New IP Packet Filter Wizard

Local Computer
Select the IP address to which the IP packet filter is applied.

Apply this packet filter to:

Default IP addresses for each external interface on the ISA Server computer

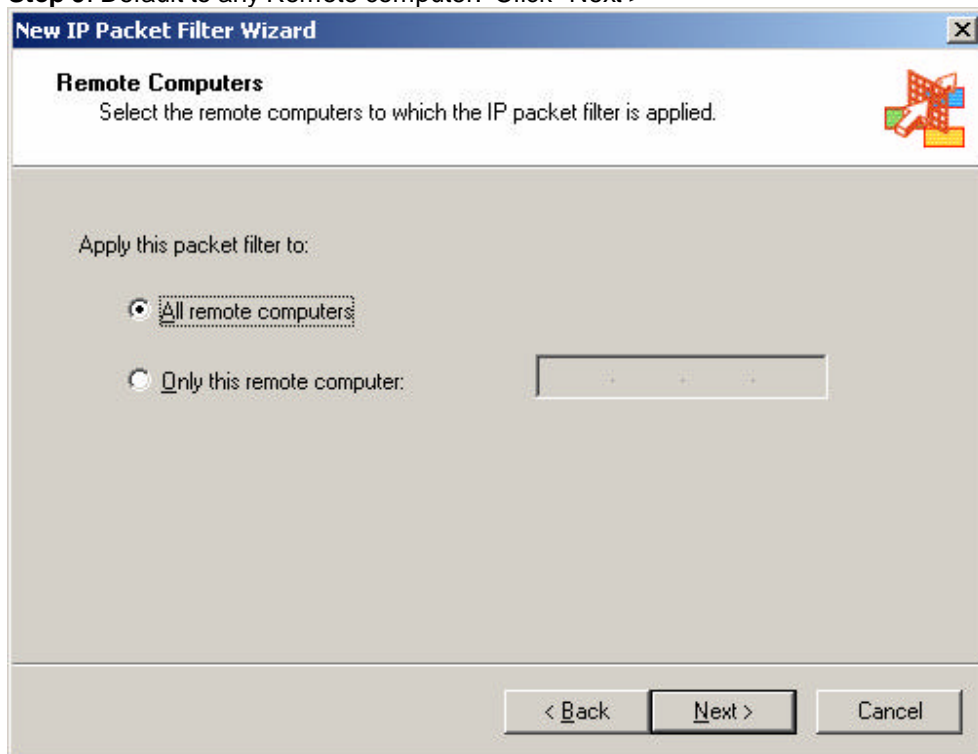
This ISA server's external IP address:

This computer (on the perimeter network):

Browse...

< Back Next > Cancel

Step 9: Default to any Remote computer. Click "Next >"



Step 10: Click "Finished". Your filter is now in place.

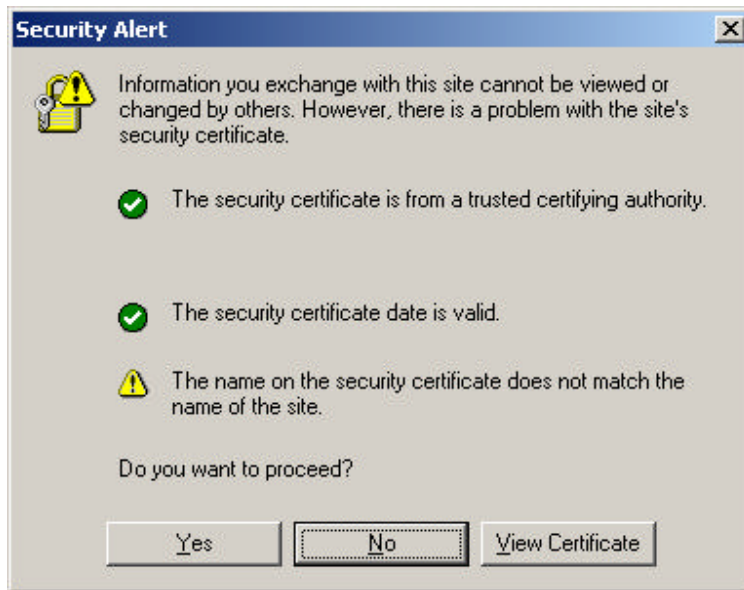
To test.

Step 1: Open Browser (IE5 or greater)

Step 2: Turn off the proxy settings. (Tools -> Internet Options -> Connections -> LAN Settings -> {Uncheck all boxes} Exit hitting the OK buttons)

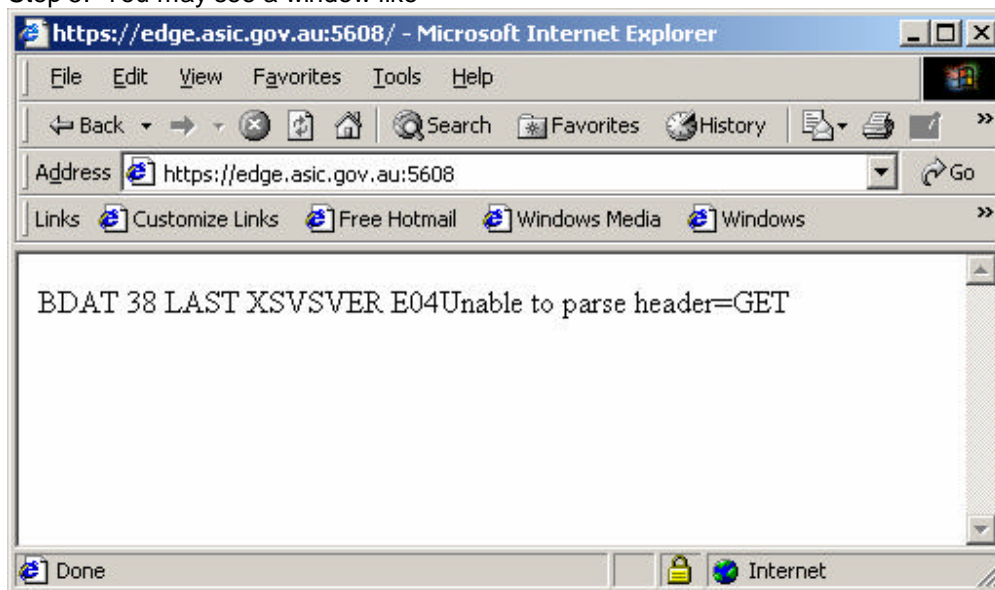
Step 3: type into Address Area <https://edge.asic.gov.au:5610> and hit enter to load the page

Step 4: You may be prompted that you are entering a secure area. Click OK/Yes
Then you will see a SSL certificate dialog



Select "Yes" to proceed. At this stage the connection is now working. Anything past this point is a "bonus"

Step 5: You may see a window like



Step 6: Close your browser.

You may now test your Prime32 software. !