

Prime32 Installation Instructions

PRIME32 INSTALLATION GUIDE

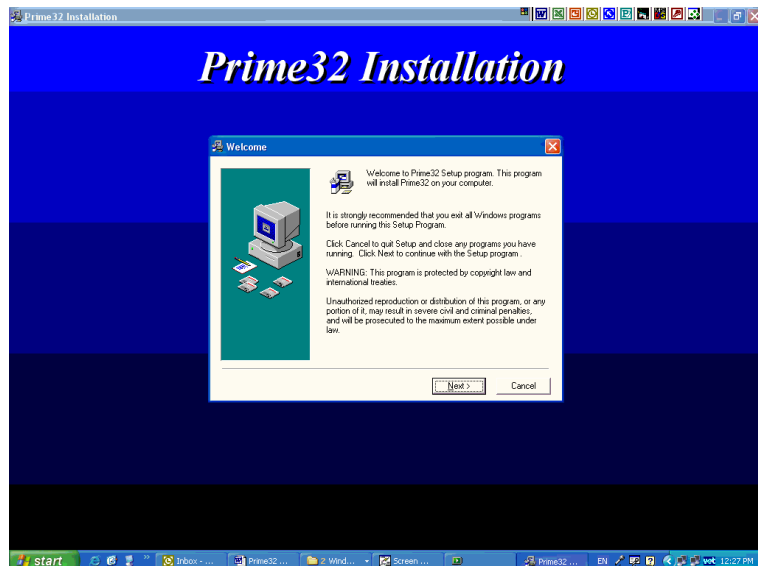
A. Prime32 Software Installation

The following steps are required to Install Prime32 Software:

- 1 Insert CD into Drive
This is an autorun CD. If the setup screen does not appear browse the CD using Microsoft explorer and run LAUNCH.EXE found in the root directory of the CD drive.



- 2 At the SetUp screen click on Install Prime32.
- 3 Click Next to proceed with Prime32 Installation.



Prime32 Installation Instructions

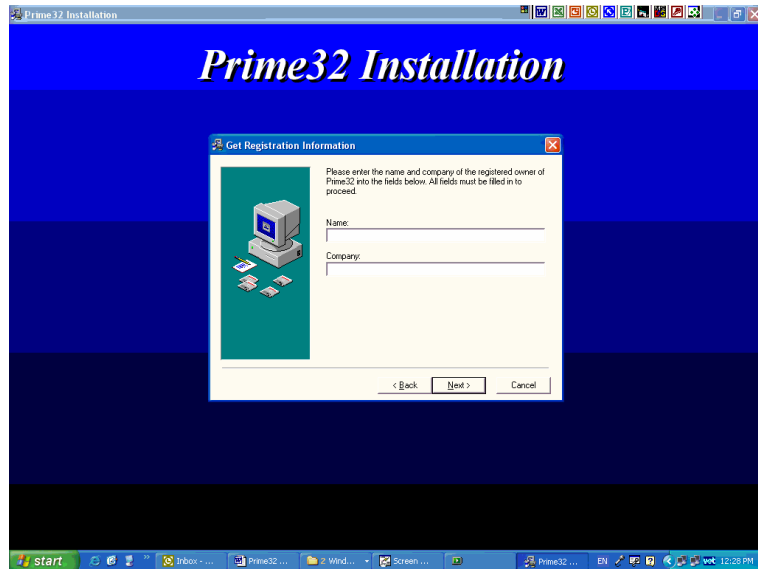
- 4 Enter your Registration Details then Click Next.

Windows 98 users only:-

A prompt re: Ole Automation Files may appear requesting a restart of the computer.

Remove the CD from the CD-Rom.

Click OK to restart, and restart the installation procedures.



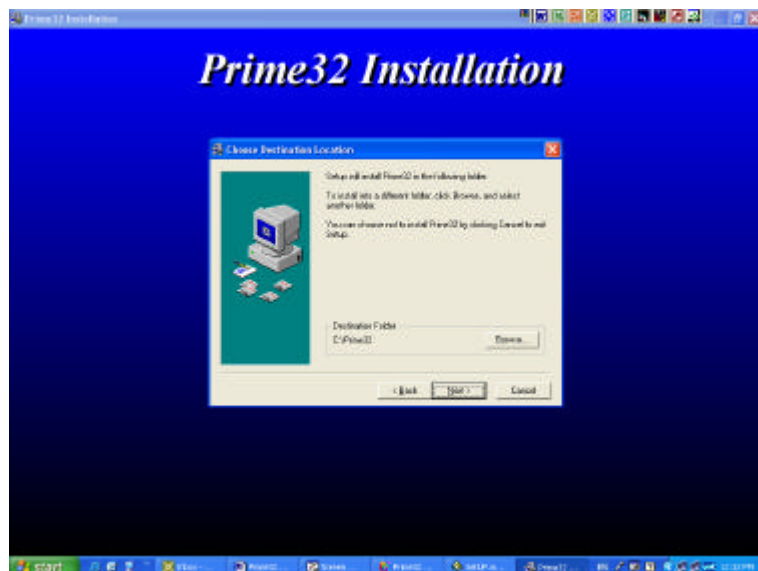
- 5 The default installation directory is "C:\PRIME32"

Click Next to accept the default (Recommended).

or click the Browse button to change the destination folder.

Note: For network users Prime32 Software must be installed at each workstation.

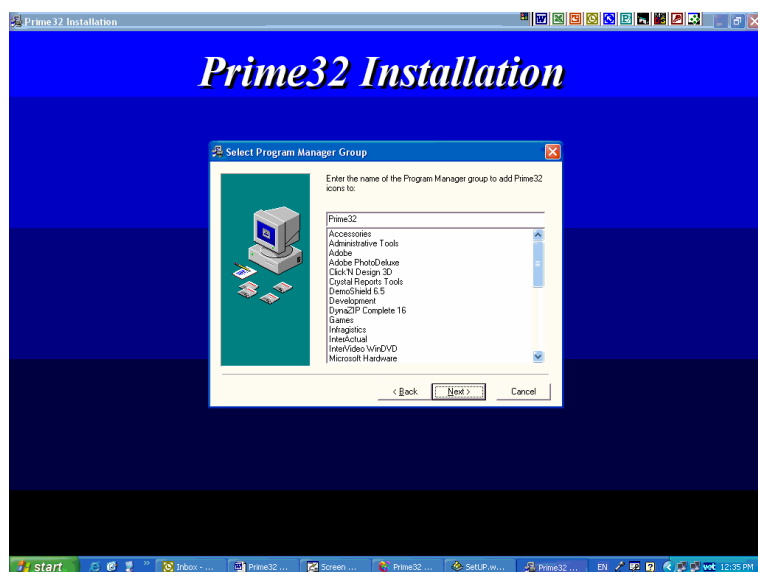
The Data can be shared on server by each user.



- 6 The default Program Group is Prime32.

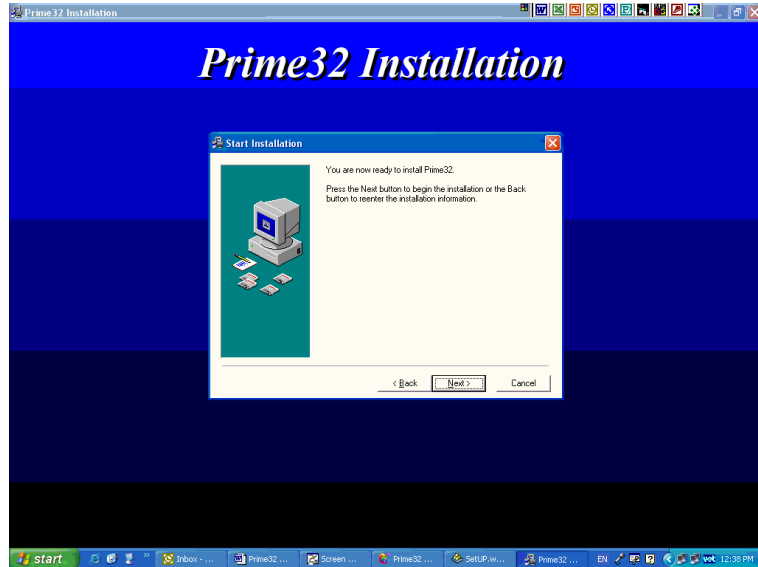
Click Next to accept the default (Recommended).

Or Enter the Program Group and click Next to proceed.



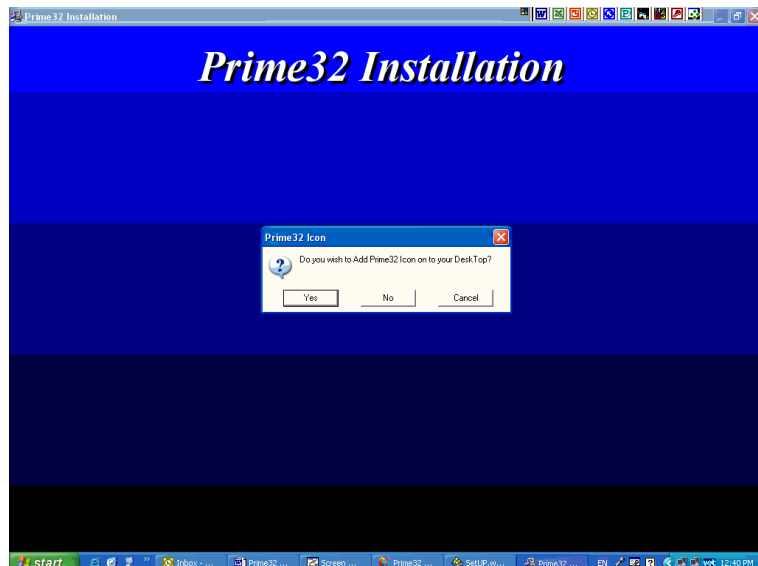
Prime32 Installation Instructions

- 7 Click Next to Start Prime32 Installation.



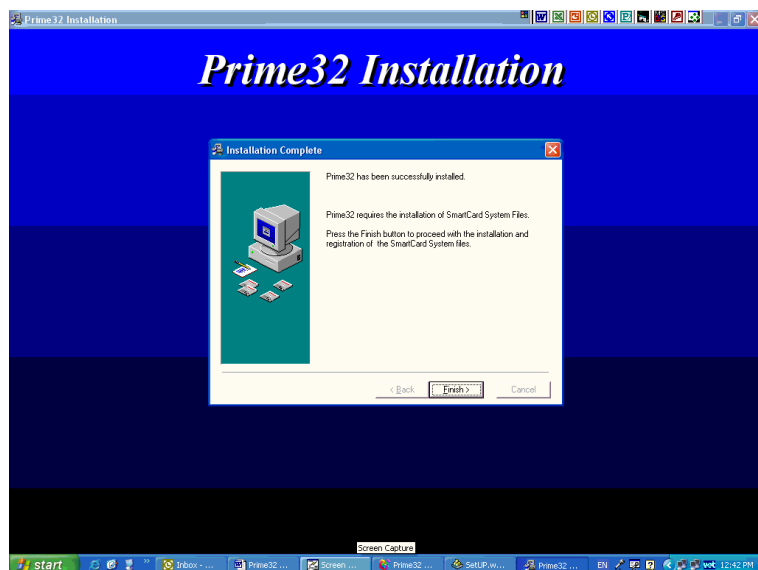
- 8 At the completion of the software installation the prompt to Add Prime32 Icon to your desktop will appear.

Click Yes to Add Icon to your Desktop (Recommended).



- 9 The Prime32 Software has now been successfully installed.

Click Finish button to close Prime32 Installation.



Prime32 Installation Instructions

B. Smartcard Installation

The following steps are required to install Smartcard Software.

Note: These steps are required by all users whether a Smartcard is installed or not.

If the Smartcard software has already been installed then you may skip these instructions and move to the next Installation Instructions Set.

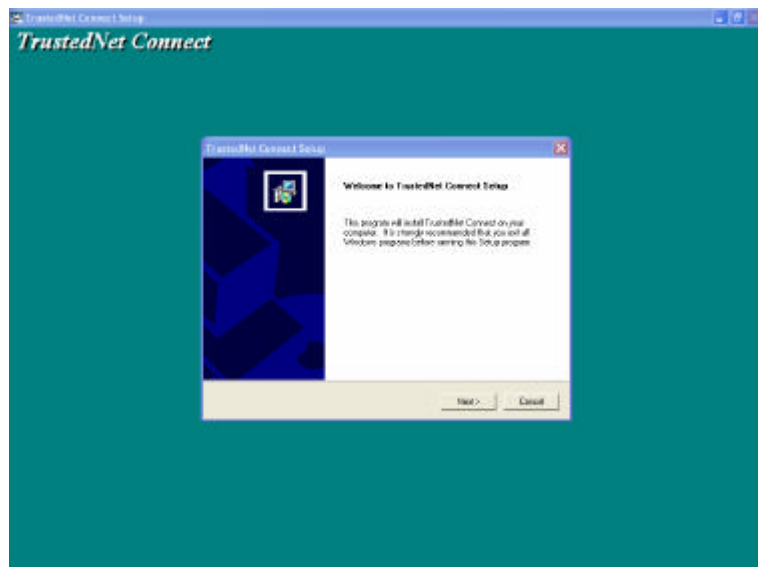
- 1 At the SetUp Screen
Click on Smartcard Installation.



- 2 The TrustedNet Connect SetUp wizard will appear.

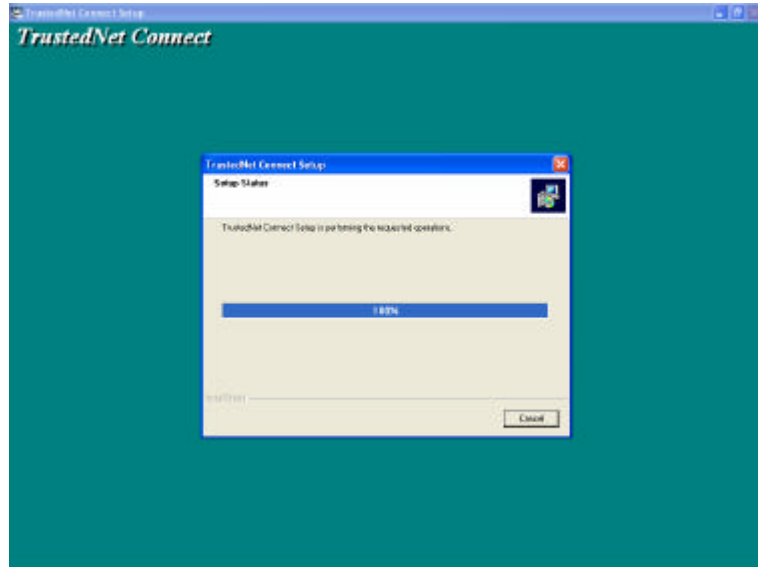
It is recommended that you exit all Windows programs before proceeding with the SetUp wizard.

Click on Next.



Prime32 Installation Instructions

6 Program files will now be installed



7 At the completion of the software installation, the Card Configuration will appear.

Select the relevant Reader (eg Gemplus GCR410) and Smartcard Port, and set the Automatic Card Re-Lock to 60 minutes.

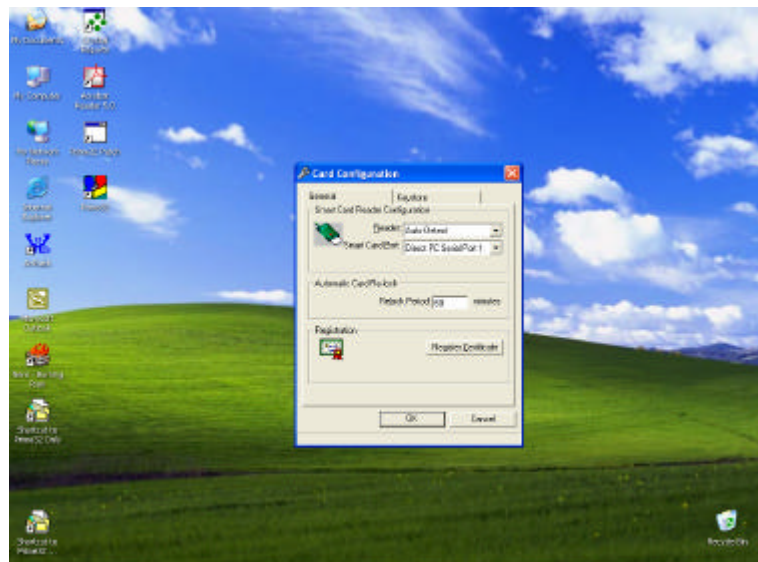
If you are unsure which Reader you have, select Auto-Detect to automatically select the appropriate Reader.

Click Ok

NB: If this screen does not appear:-

Click Exit from the main Prime32 Installation screen.

Go to your desktop and double click on the TrustedNet Connect icon (Padlock) located in your system tray (bottom right-hand corner) and click on Options.

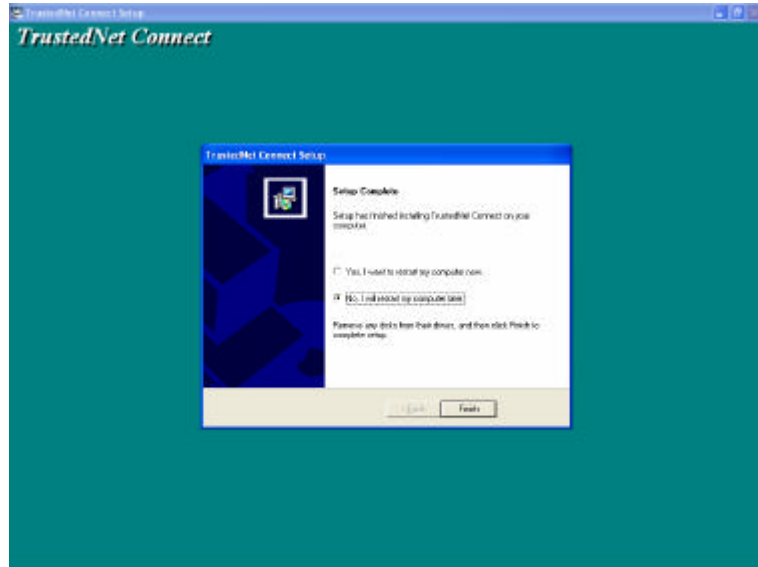


Prime32 Installation Instructions

- 8 TrustedNet Connect SetUp is now complete.

Select no, I will restart my computer later.

Click Next.



- 9 Your screen will now return to the main installation screen.

If you operate on a Windows 2000 or Windows XP platform, click Exit and go directly to Section E.

All other platforms, go to the next Section.



Prime32 Installation Instructions

C. Microsoft Data Access Installation

Prime32 uses Microsoft Access 2000 Files as its DataBase.

If you are running Windows 2000 or Windows XP you **do not** need to perform this installation step.

The following steps are required to install Microsoft Data Access Components.

- 1 At the SetUp screen click on Microsoft Data Access Installation.

This Installation set has been prepared by Microsoft.



- 2 The Microsoft Data Access Components End User Licence Agreement will appear.

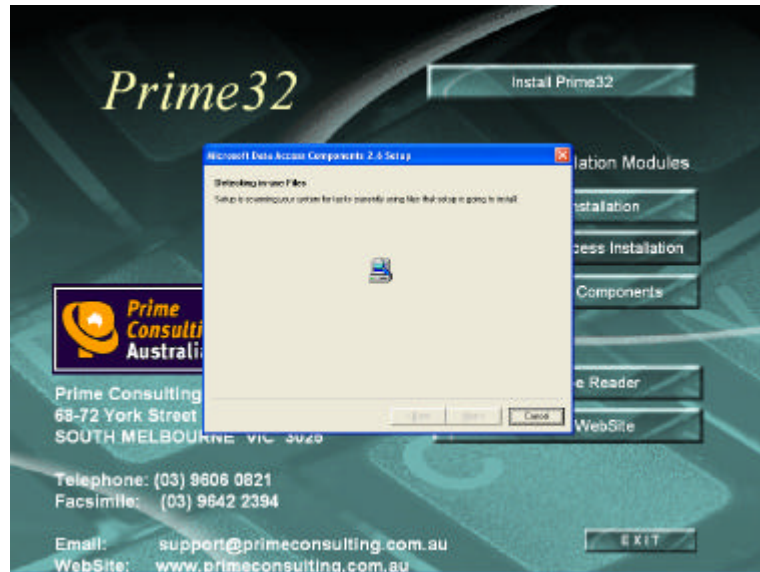
Click on "I accept all of the terms of the preceding licence agreement"

Then click on Next.



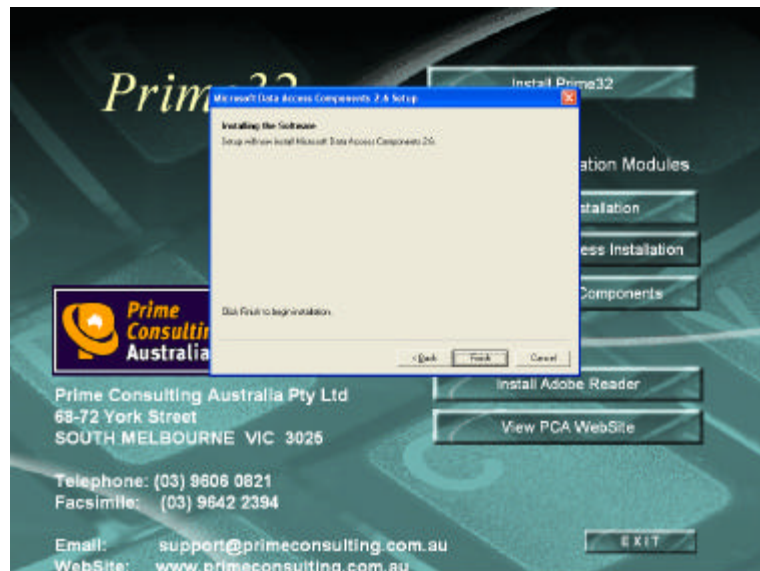
Prime32 Installation Instructions

- 3 The Detecting In-Use Files screen will appear.



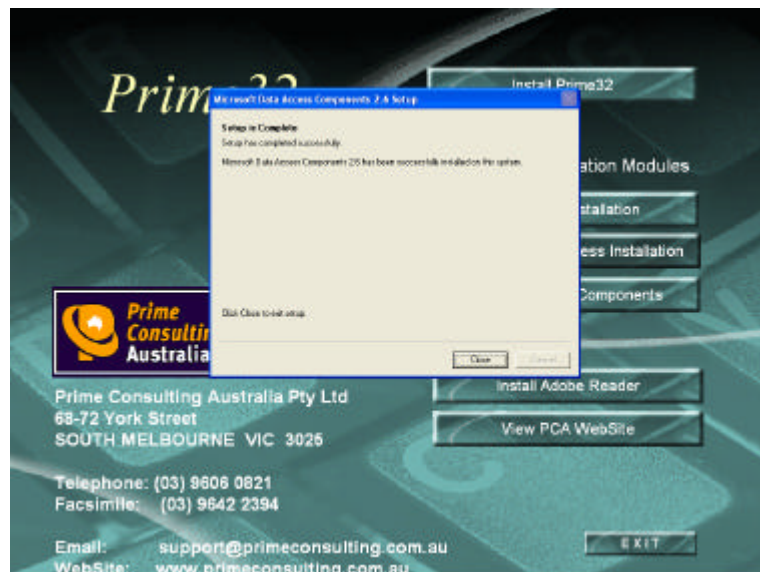
- 4 The Microsoft Data Access components are now ready for installation.

Click Finish button to begin installation.



- 5 SetUp is now complete

Click Close, and you will return to the main installation screen.



Prime32 Installation Instructions

D. Additional Data Components

Prime32 requires additional Microsoft Data Components to be installed.

If you are running Windows 2000 or Windows XP you **do not** need to perform this installation step.

The following steps are required to install the additional Microsoft Data Components.

- 1 At the SetUp Screen
Click on Additional Data Components.

This Installation set has been prepared by Microsoft.



- 2 The required file will be installed automatically and will return to the main Prime32 install window.
- 3 Click Exit from the main Prime32 Installation screen.

Prime32 Installation Instructions

Demo Users

To evaluate the Prime32 software, the following user ID and password is available.

- 1 Click on the User ID dropdown button and select DEMO from the pick-list.

Type DEMO in the password field.

NB: Please note there are restrictions to some functions in DEMO mode.

