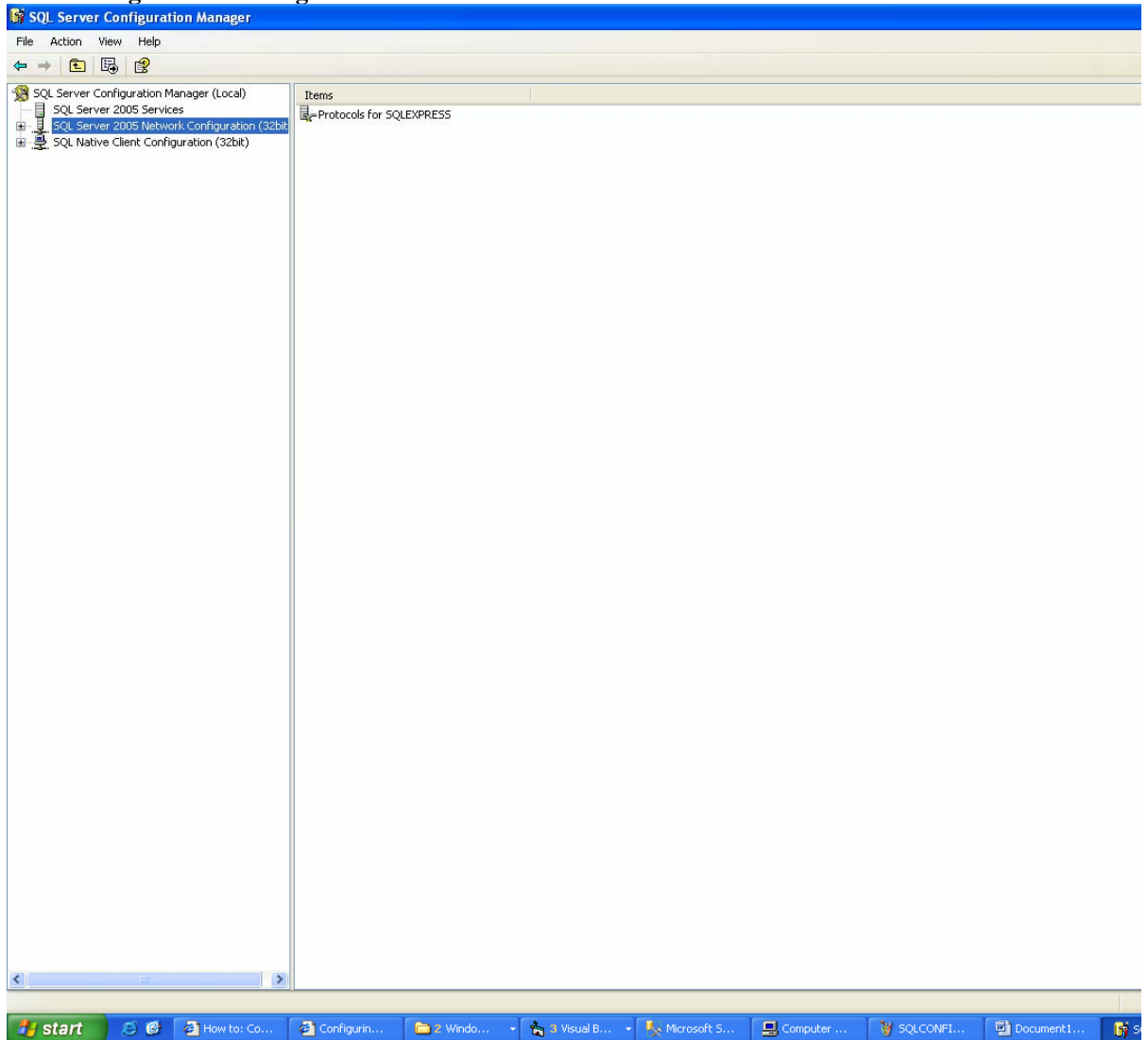


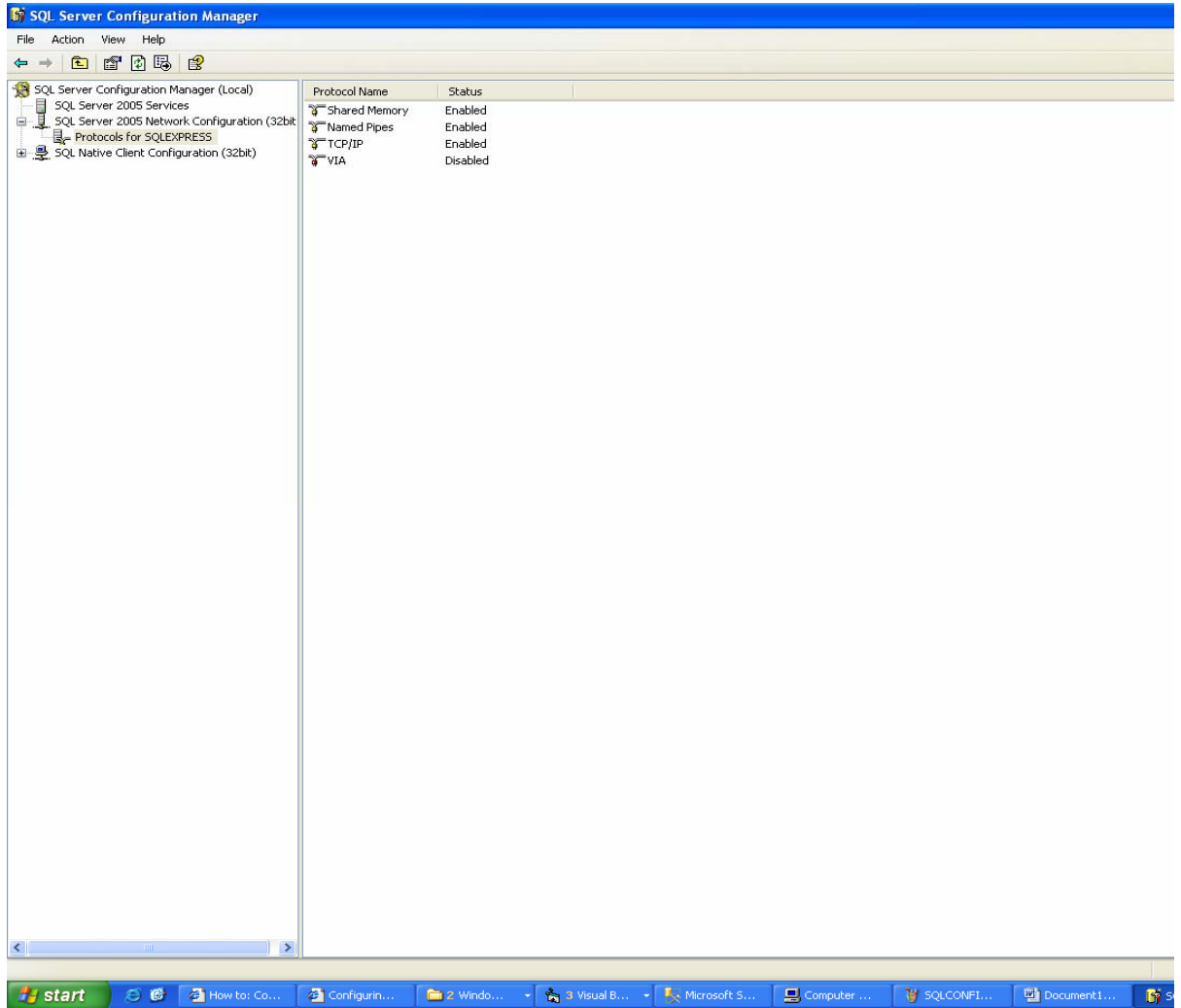
## 1. CONFIGURING REMOTE ACCESS TO SQL SERVER EXPRESS

From the **Start** menu, point to **All Programs**, point to **Microsoft SQL Server 2005**, point to **Configuration Tools**, and then click **SQL Server Configuration Manager**.

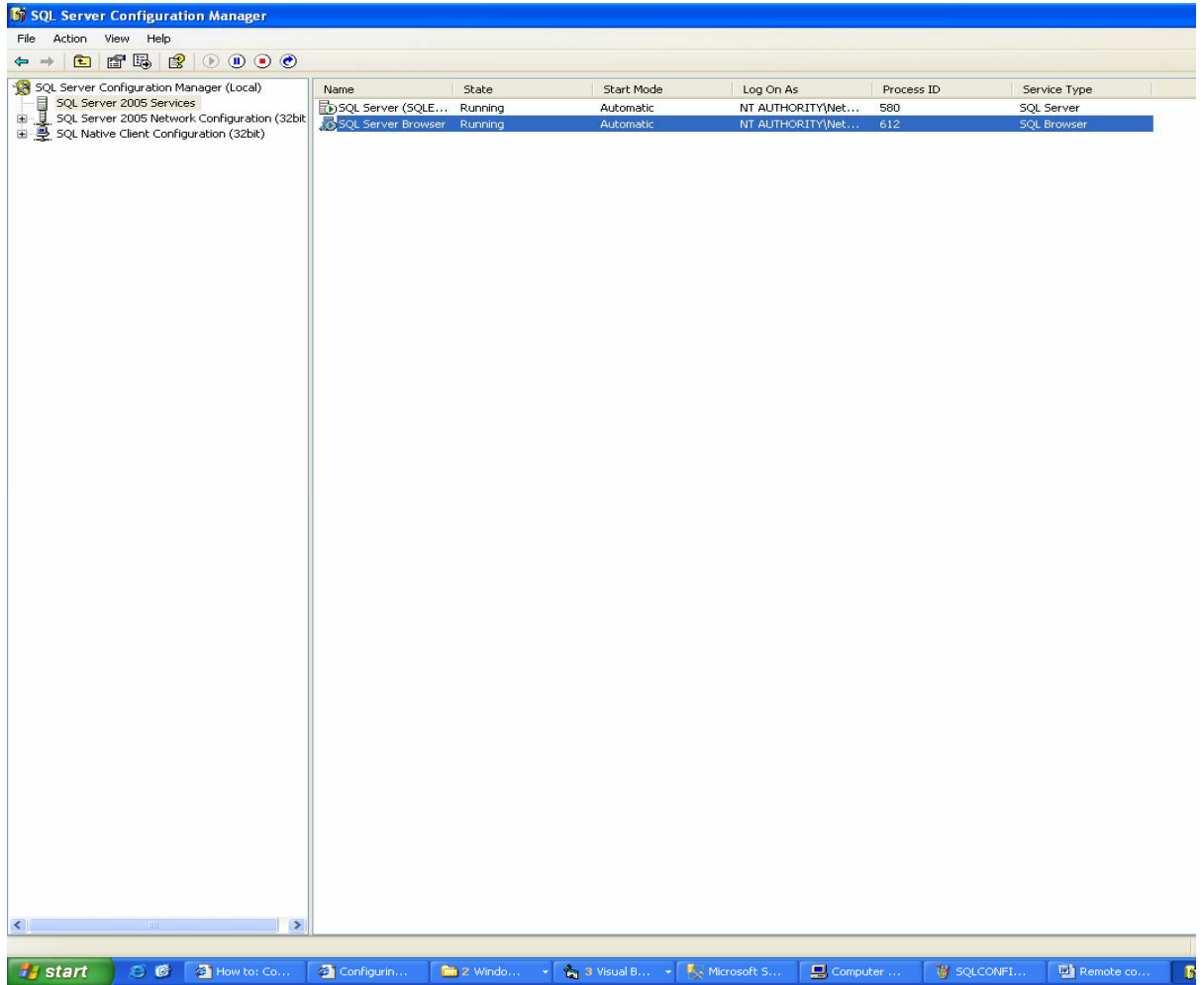
Optionally, you can open Computer Manager by right-clicking **My Computer** and choosing **Manage**. In Computer Management, expand **Services and Applications**, and then expand **SQL Server Configuration Manager**.



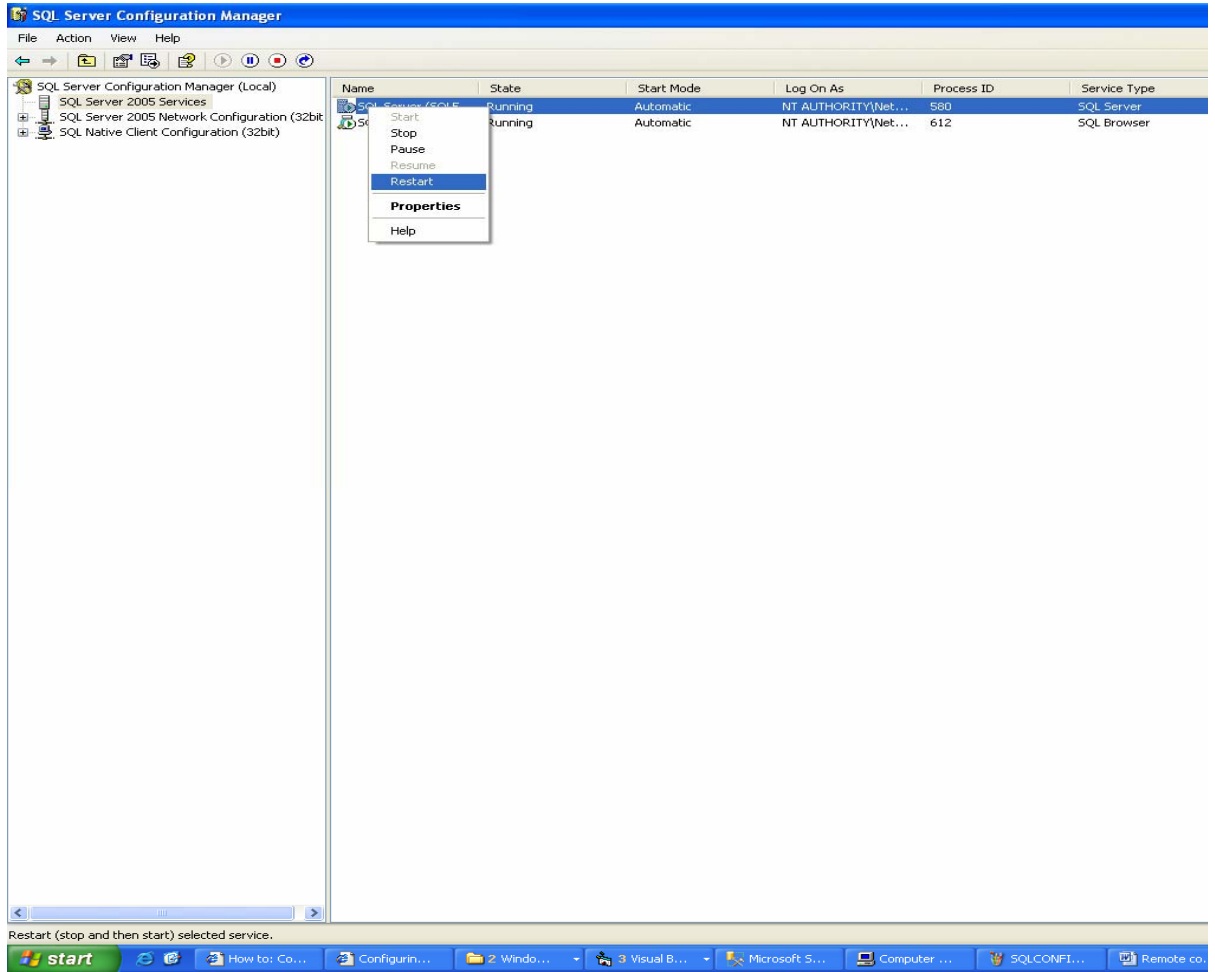
Expand **SQL Server 2005 Network Configuration**, and then click **Protocols for Instance Name**. Then double click protocols. If Shared memory, Named Pipes, TCP/IP are not enabled right click on them and click Enable



Now double click Sql Server 2005 Services and make sure Sql Server browser is running.If not right click on it and click start

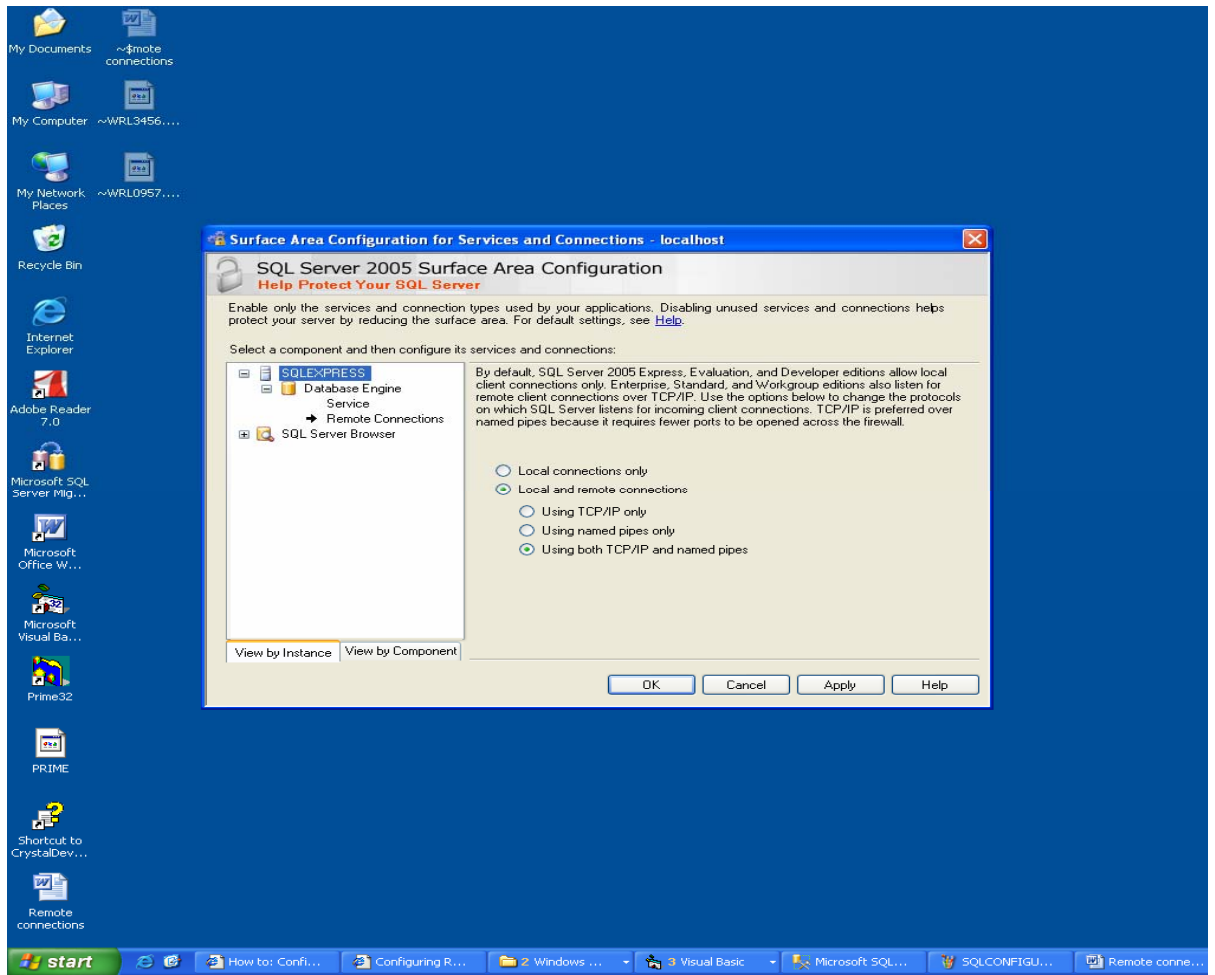


Make sure to restart both SQL Server and SQL Server Browser after making changes

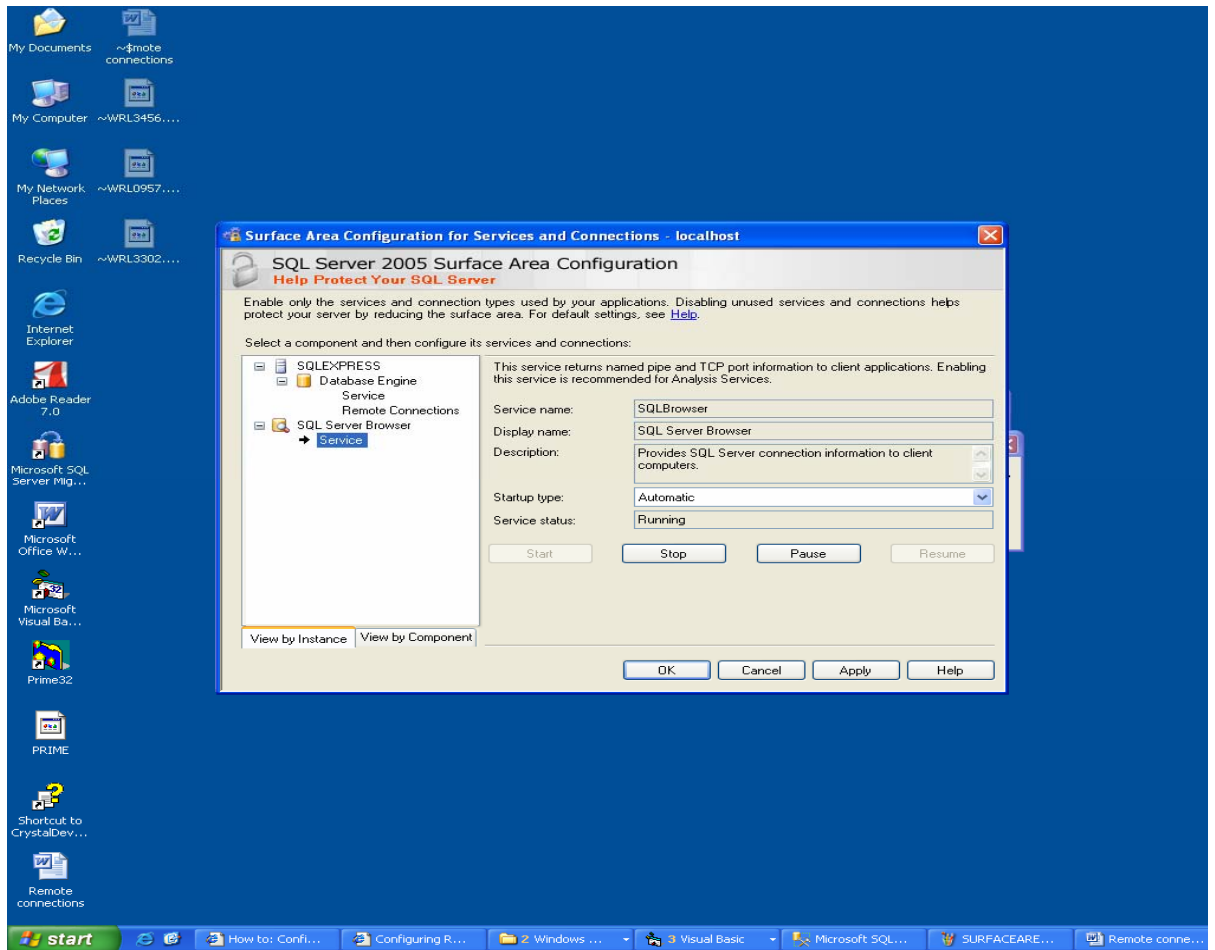


Now from the **Start** menu, point to **All Programs**, point to **Microsoft SQL Server 2005**, point to **Configuration Tools**, and then click **SQL Server Surface Area Configuration**. Click on Surface Area Configuration for services and connections

Expand SQLEXPRESS-> Database Engine and select remote Connections. Make sure local and remote connections option is selected



Expand SQL Browser-----> Service .The start up Type has to be Automatic.



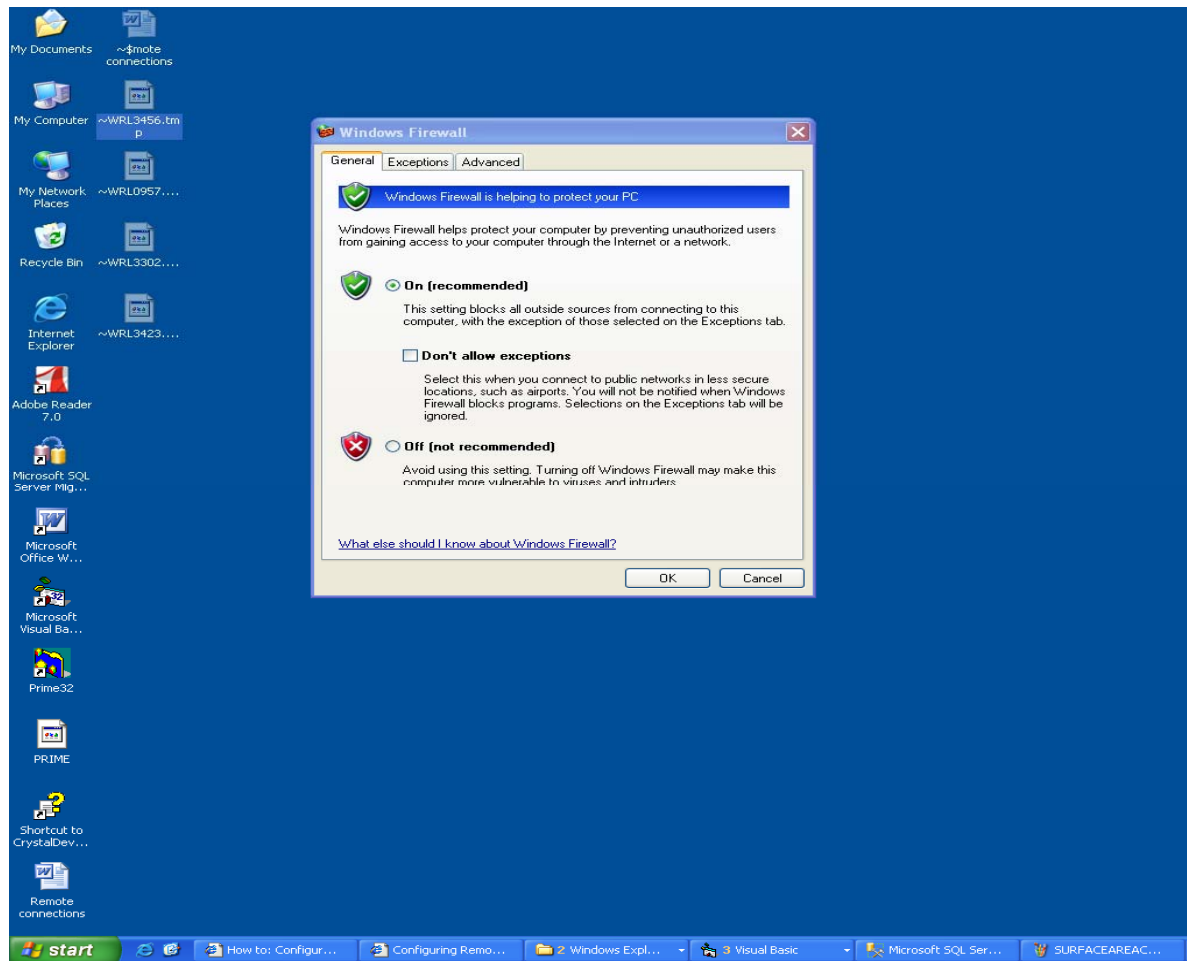
Click Apply and OK.

## 2. CONFIGURING FIREWALL FOR SQL SERVER ACCESS

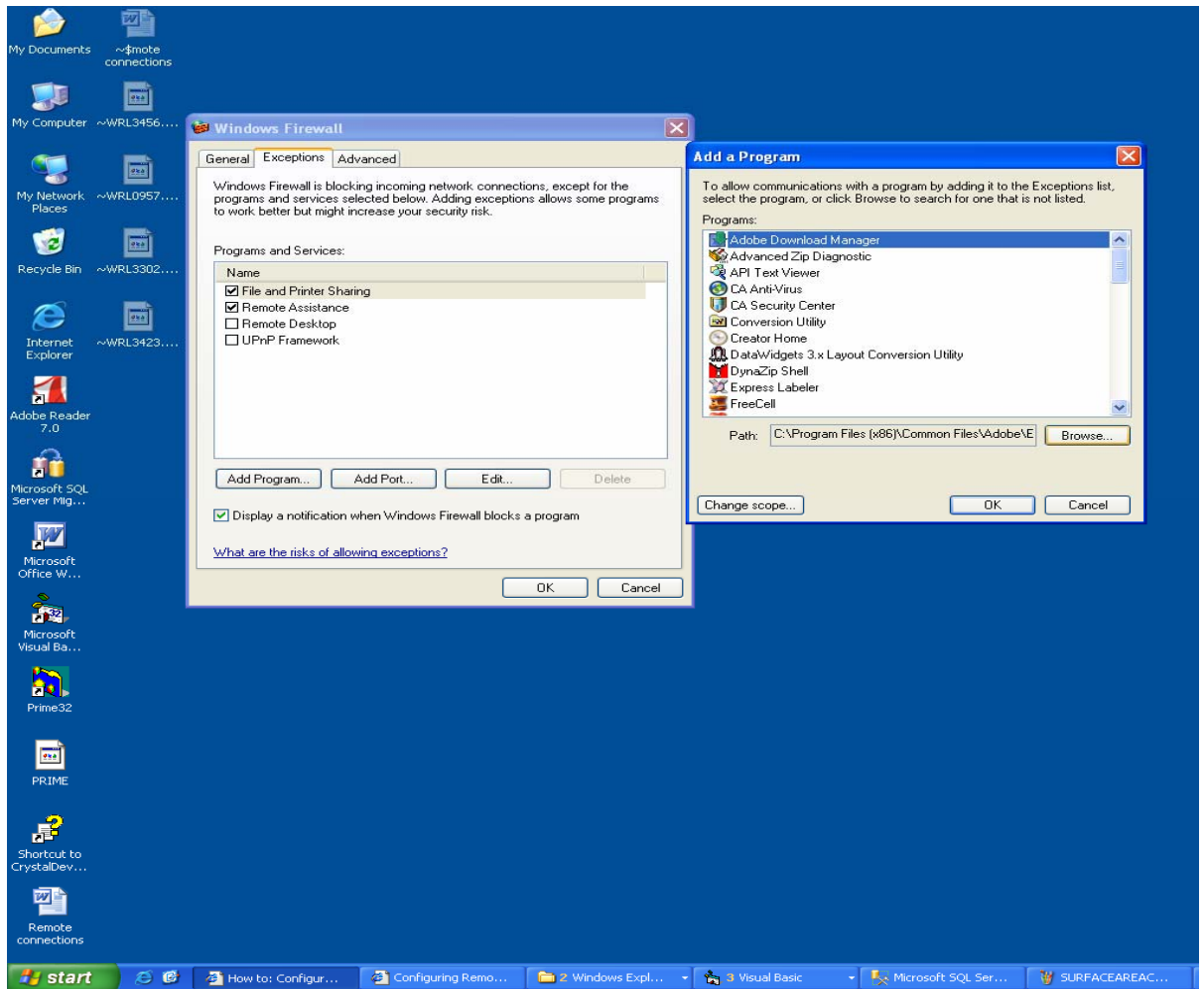
In Control Panel, open **Windows Firewall**

**Or**

In Control Panel, open **Network Connections**, right-click the active connection, and then click **Properties**. Click the **Advanced** tab, and then click **Windows Firewall Settings**



In the Windows Firewall dialog box, on the **Exceptions** tab, click **Add Program**



Click **Browse**, and navigate to the instance of SQL Server that you wish to access through the firewall, and then click **Open**. By default SQL Server is at

**C:\Program Files\Microsoft SQL Server\MSSQL.1\MSSQL\Binn\Sqllservr.exe.**

Click **OK**

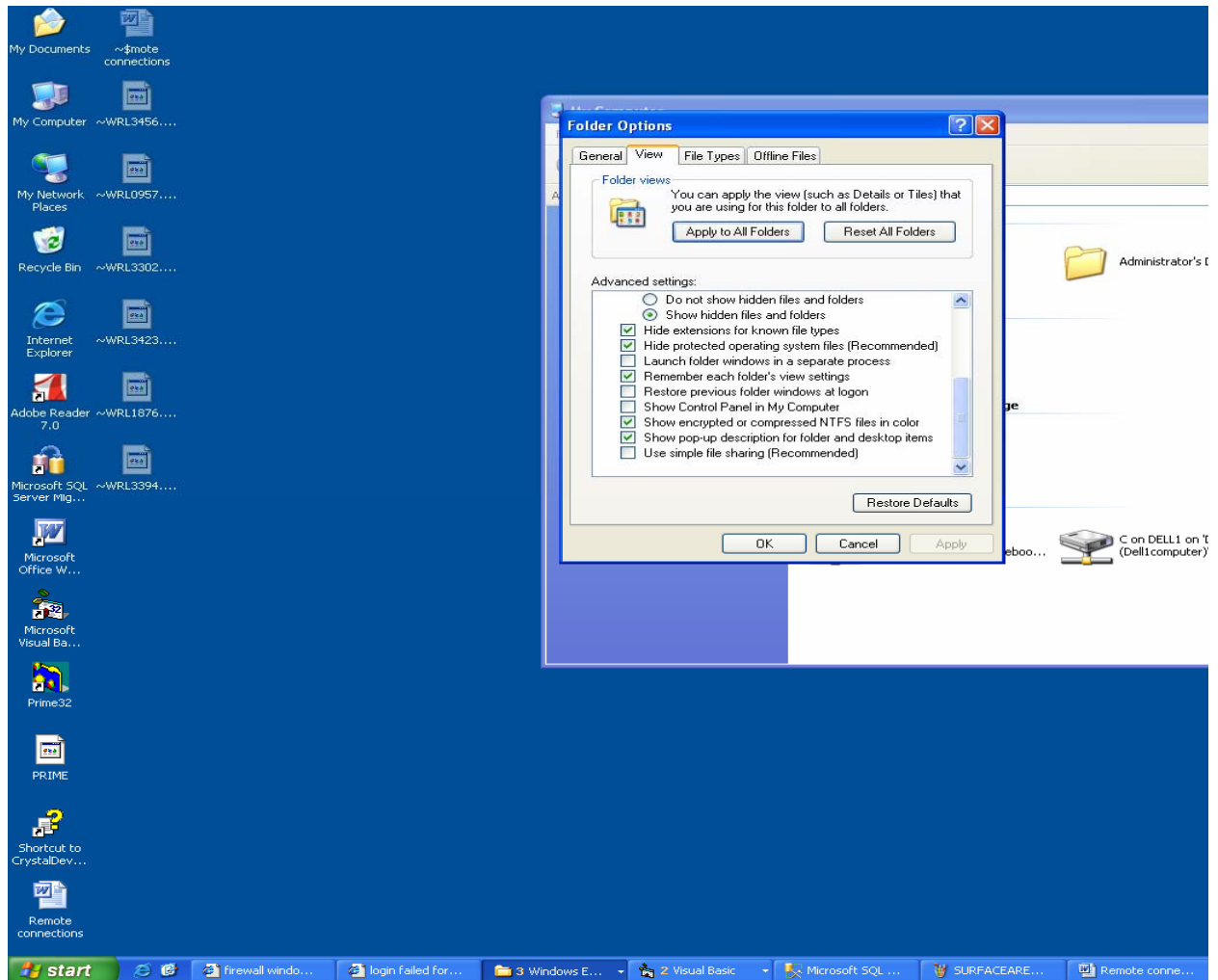
Now add another program SQL Browser whose default location is

**C:\Program Files\Microsoft SQL Server\90\Shared\sqlbrowser.exe**

Click **OK** and close the Windows Firewall.

### 3. [Optional]

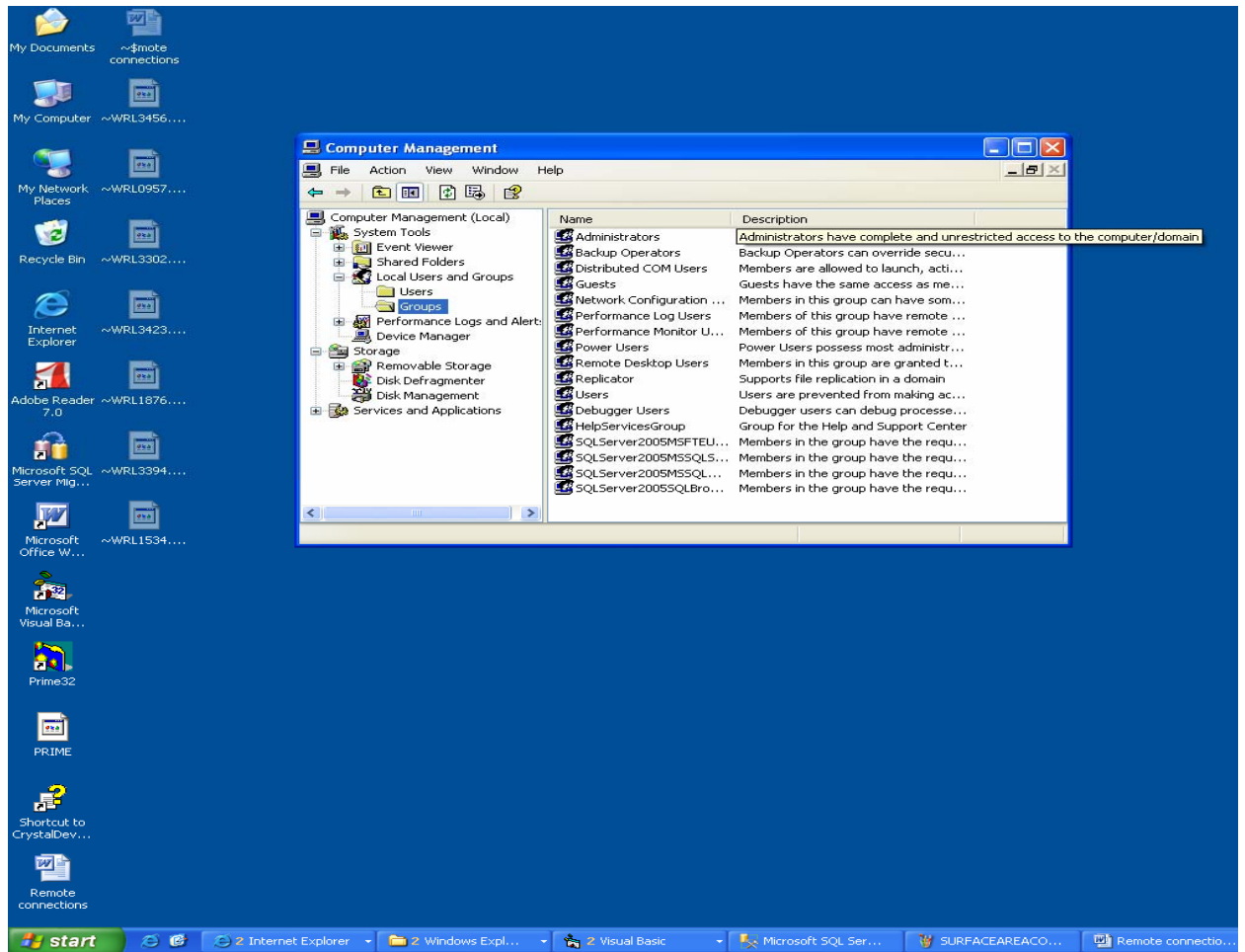
Open My Computer .Choose Folder Options from Tools. In Folder options dialog box click on View tab and unselect the option Use simple file sharing



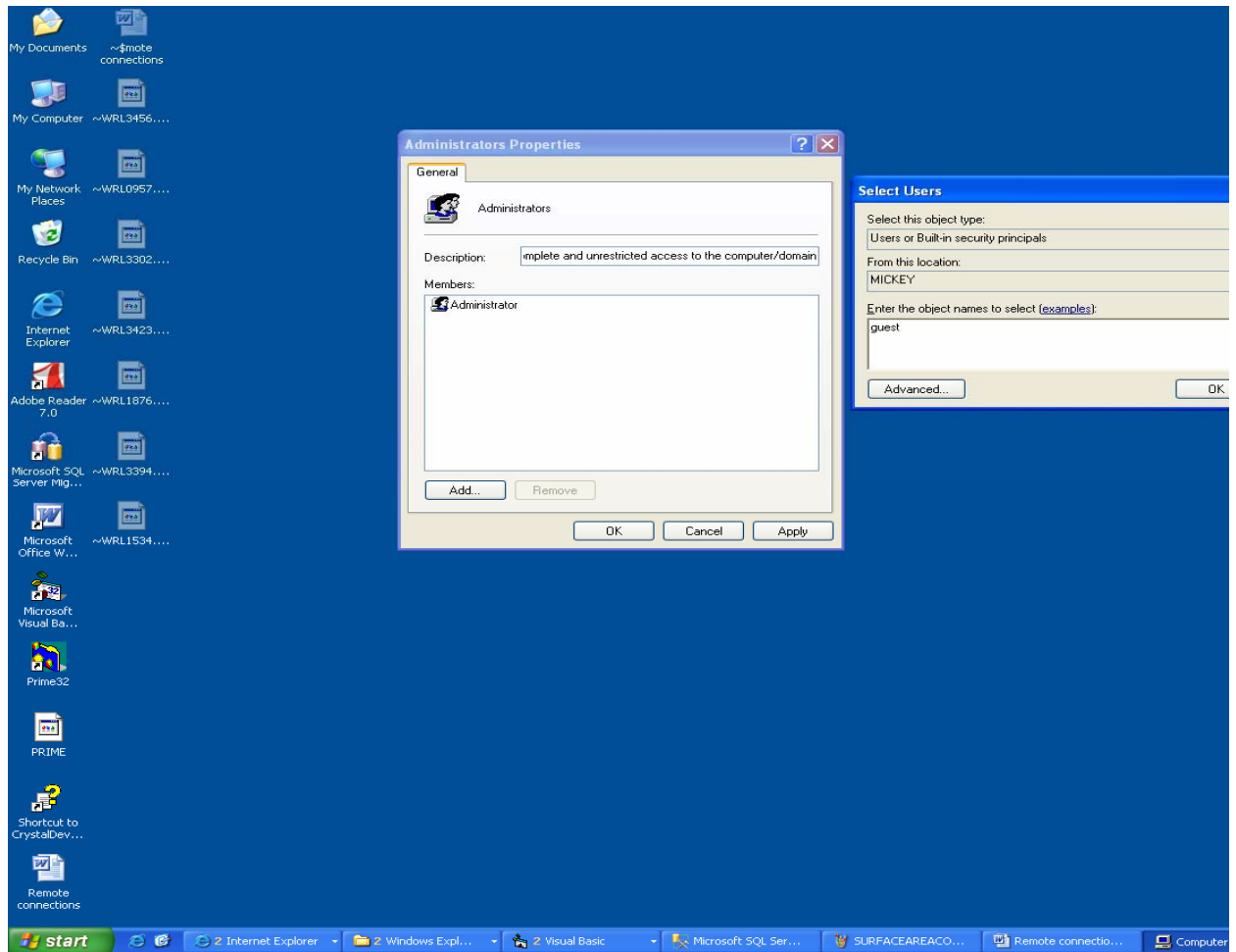
#### 4. Adding Guest Account

##### For XP Professional

- i) Guest account has to be on. Go to Control panel→ User Accounts→ Click on Guest
- ii) Go to My Computer. Right click and select Manage.  
Select local users and groups from System Tools  
Select Groups



Double click on Administrators and click on Add button in Administrators properties. You will get a Select Users dialog box as shown on the right hand side. In the Enter the object name to select type guest and click on Check names button



The name guest will change to computername\guest. Click Ok to close Select users and again Ok to close Administrators properties

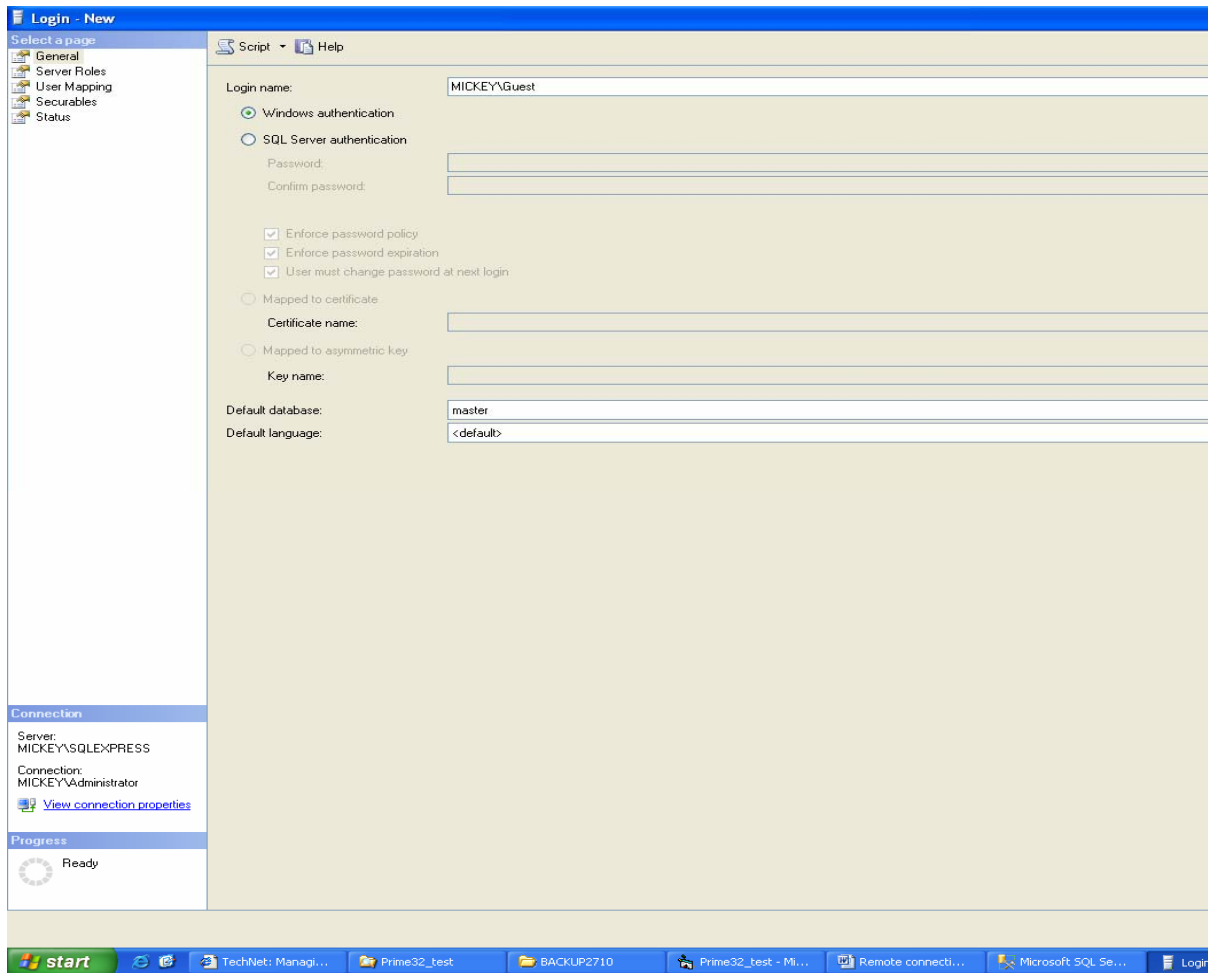
## XP Home

Guest account has to be on. Go to Control panel → User Accounts → Click on Guest

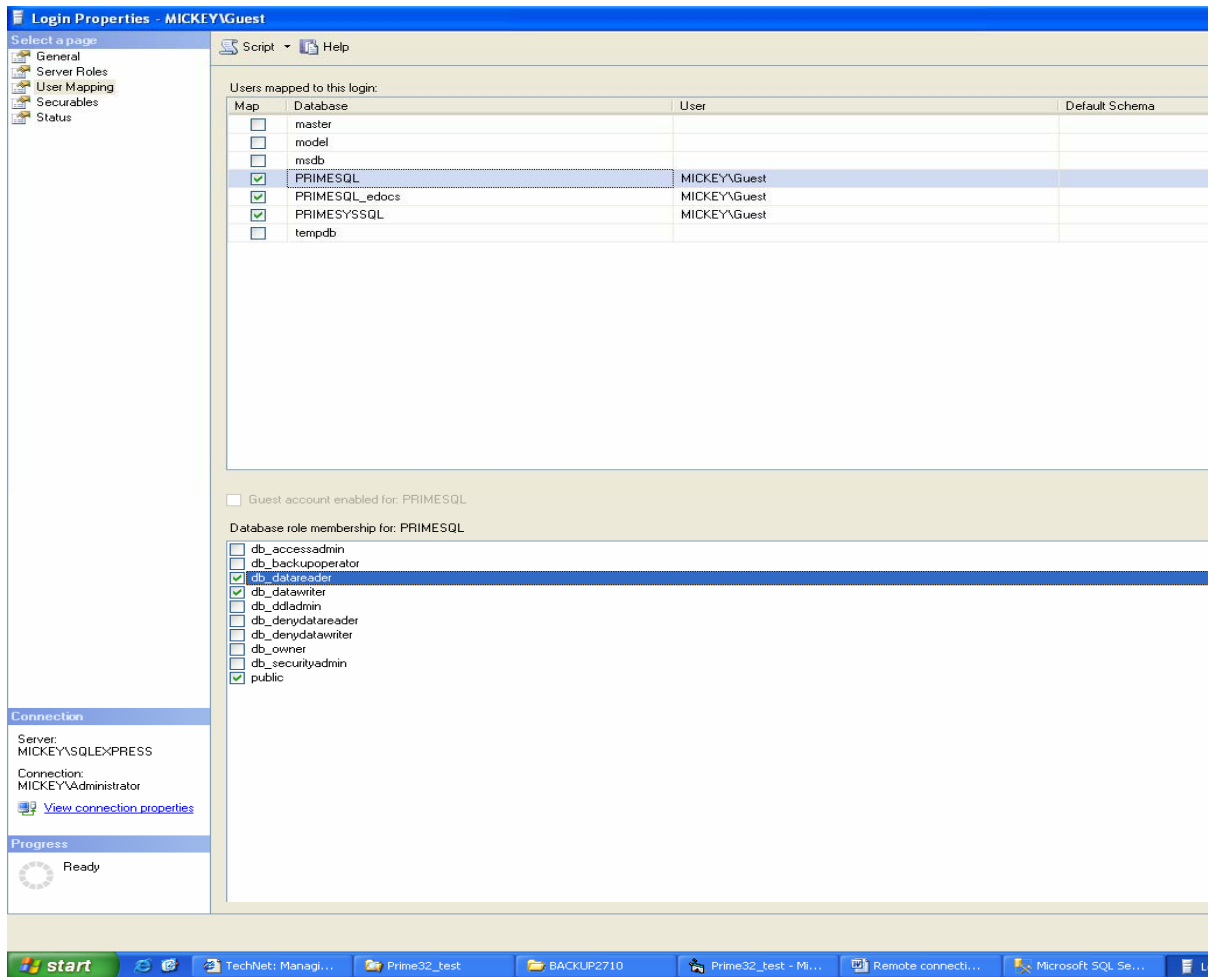
With XP home, authentication is done using the guest account as simple file sharing is always enabled on XP Home. You have to add the user account guest in SQL Server

i) To add a new login

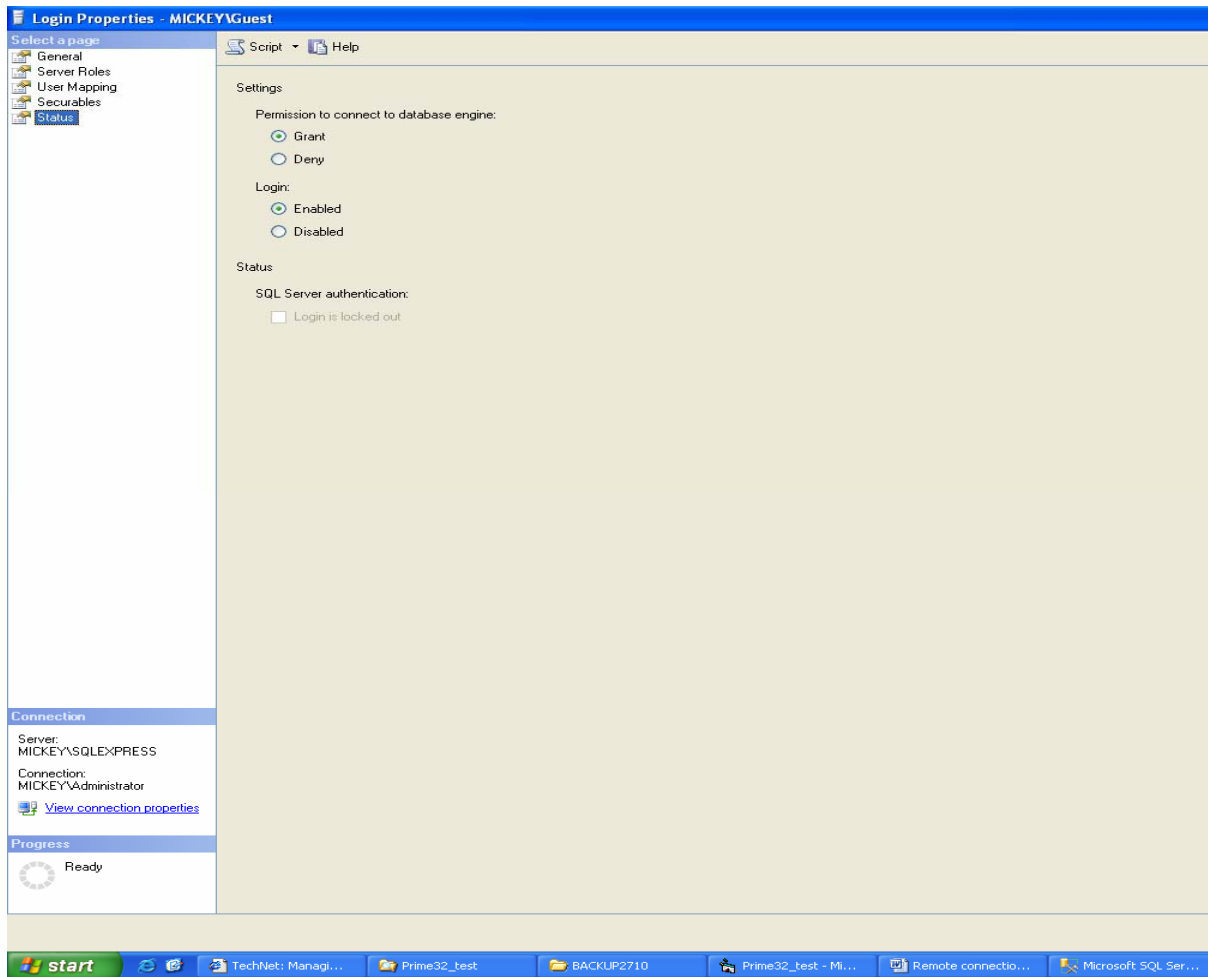
Expand Security on Object browser. Right Click on Login and click on New login. In the Login name box type computer name\guest. Select Windows authentication



ii) Set up user mapping. User mappings provide the relationship between a login and. Select the corresponding SQL user system databases the login needs access to the system database. Lastly, select the database roles. Typically a login will have the **db\_datareader** and **db\_datawriter** fixed database roles.

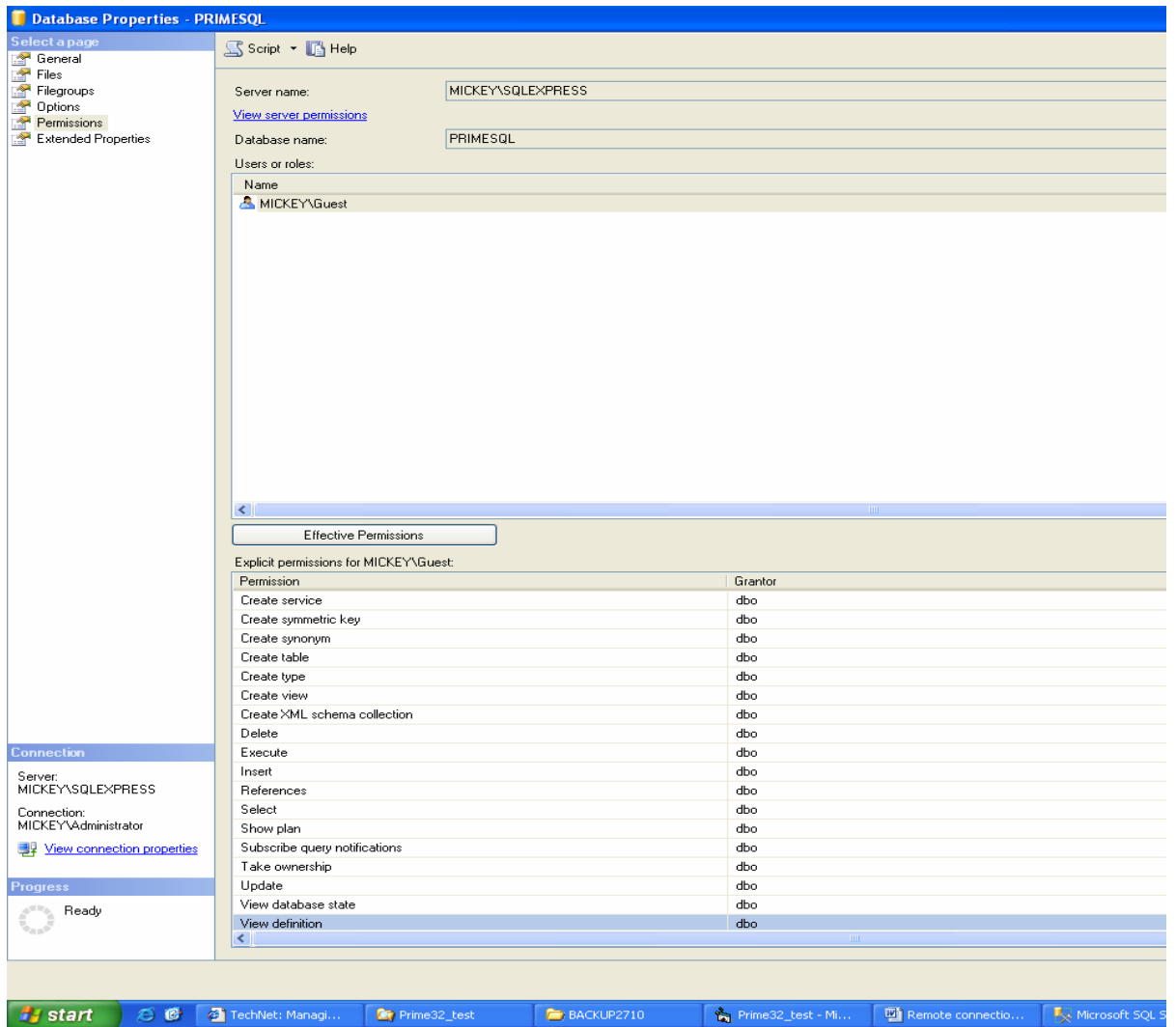


Click on Status and make sure Grant is selected and Login is enabled



Click OK.

Now right click on the database and select properties. Click on Permissions tab. Select the basic to be permissions granted to the user to perform operations on the database.(eg,Alter,Backup Database, Backup log,Connect,Create table, Create View,Delte,Execute,Insert,Select,Update,View Database State, View Definition)



Click OK