

The new version of Prime32 now uses SQL Database.

**Note - We recommend that the Prime database be installed on your selected SQL Server if it is already installed.**

**If you do not have Microsoft SQL installed then we recommend that you install Microsoft SQLExpress on your Server (including Management Studio).**

**We recommend SQL Server 2005 be installed together with SQL Express Management Studio.**

**The Microsoft Installation File can be downloaded from Microsoft or at the following Prime location:-**

[www.primeconsulting.com.au/software/downloads/prime32/sql/SQLEXPRESS\\_ADV.EXE](http://www.primeconsulting.com.au/software/downloads/prime32/sql/SQLEXPRESS_ADV.EXE)

**The Microsoft Native Client can also be downloaded from Microsoft or at the following Prime location:-**

[www.primeconsulting.com.au/software/downloads/prime32/sql/sqlIncli.msi](http://www.primeconsulting.com.au/software/downloads/prime32/sql/sqlIncli.msi)

**(Warning – DO NOT INSTALL WITHOUT CONSULTING YOUR IT MANAGER)**

The steps required to install the SQL version of Prime32 are as follows:-

1. Run the following SQL script in Query Analyser or its equivalent

[www.primeconsulting.com.au/software/downloads/prime32/sql/PrimeSQLQuery\\_INSTALL.sql](http://www.primeconsulting.com.au/software/downloads/prime32/sql/PrimeSQLQuery_INSTALL.sql)

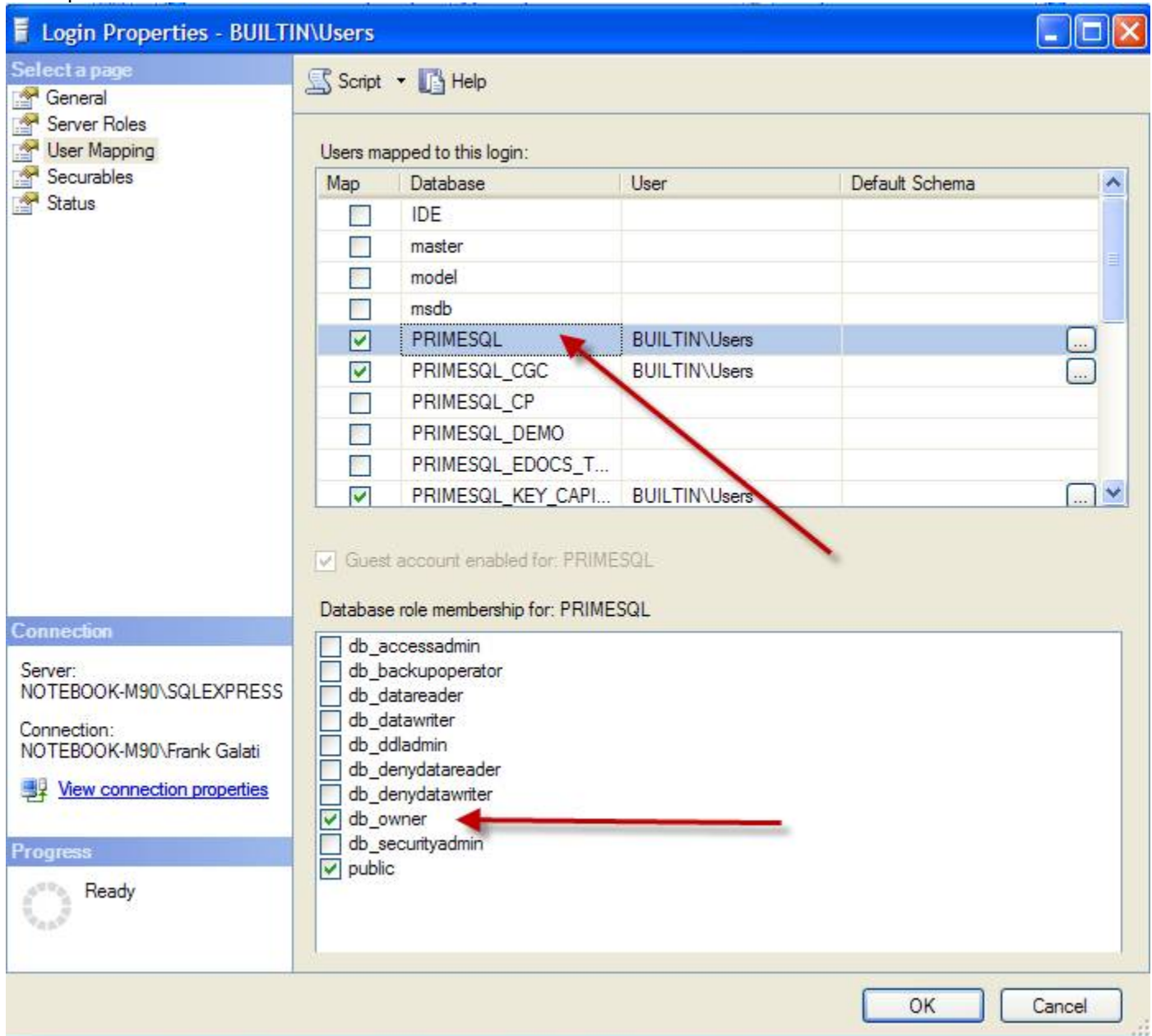
We recommend Windows Authentication as the preferred security – however we can setup UserID and Passwords if necessary.

2. Step 1 will create a database PRIMESQL on the nominated Server as chosen by you.

We recommend that a PRIME User group be setup in SQL to allow USER MAPPINGS to the PRIMESQL Database.

We recommend that DbOwner rights be set for the Prime Users.

A sample screen is as follows:-



3. You **must** be operating the latest version of Prime32 before you install the SQL Version.

The latest download for Prime32 is located at:-

[www.primeconsulting.com.au/software/Patch.EXE](http://www.primeconsulting.com.au/software/Patch.EXE)

**We recommend that you run this download.**

**The following steps are then required in Prime32 (previous version):**

**Log Back Into Prime32**  
**Perform any software requested Updates to Data**  
**Perform an Update of your LogIn Data via:-**  
**Clicking System > Data . Update LogIn Data**

**The above steps are important to ensure that the new version of Prime32SQL is using an up to date version of both your Data and LogIn Data files.**

- At the workstation please install the Prime32SQL Software from:-

[www.primeconsulting.com.au/software/downloads/prime32/install/Prime32\\_Installation.msi](http://www.primeconsulting.com.au/software/downloads/prime32/install/Prime32_Installation.msi)

This step will install Prime32SQL files.

Note – Previous version of Prime32 can continue to operate in the meantime.

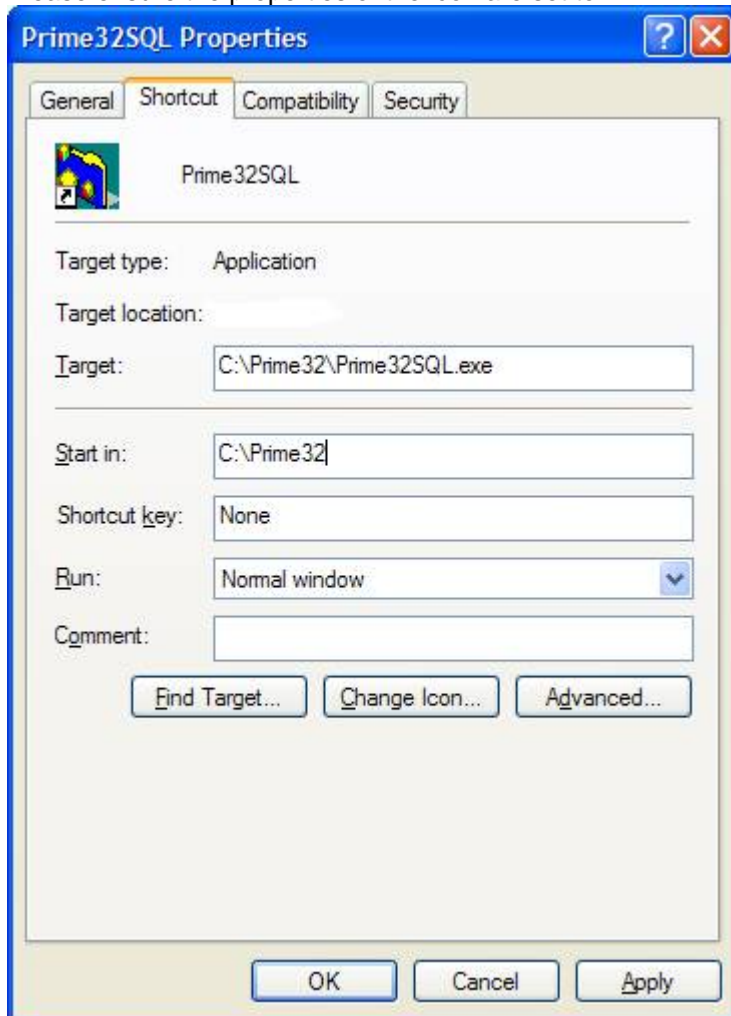
- Prime32SQL uses Version 11 of Crystal Reports.  
Please also install the following runtime files on the workstation(s).

[www.primeconsulting.com.au/software/downloads/bin/crystal/Crystal11\\_Runtime.msi](http://www.primeconsulting.com.au/software/downloads/bin/crystal/Crystal11_Runtime.msi)

- The latest version of PrimeSQL software must also be run at:-

[www.primeconsulting.com.au/software/PatchSQL2.EXE](http://www.primeconsulting.com.au/software/PatchSQL2.EXE)

- A new Prime32SQL Desktop Icon will be created.  
Please ensure the properties of the icon are set to



- Run Prime32SQL by double-clicking on the desktop icon.  
Enter your user name and password then click Keycodes button:-



This Software is Licensed to  
Prime Consulting (Australia) Pty  
Ltd

**Version 5.0.4**

Copyright  
[www.primeconsulting.com.au](http://www.primeconsulting.com.au)

Prime Consulting (Australia) Pty Ltd  
**Professional Software Solutions**

LogOn

**prime<sup>32</sup> SQL**

User ID: PRIME (dropdown menu)

PRIME32

Password: [masked]

Buttons: KeyCodes, Ok, Cancel

**George Orwell was an optimist.**

9. At the keycodes Window click on System Paths button:-

Key Codes Edit - PRIME

**Key Codes Edit - [PRIME]**

Product KeyCode

**Please enter a Valid KeyCode for each required Module.**  
You can obtain a Valid KeyCode by contacting Prime Consulting Australia  
on (03) 9606 0821  
OR Complete and Print the KeyCode Request FaxSheet  
The Keycodes will be supplied by return Fax.

Product KeyCodes

Module	Serial No.	KeyCode	
Corporate Register	XVPA-VQXD-05610	.....	<input checked="" type="checkbox"/>
Electronic Incorporations	HSEH-FLMU-92061	.....	<input checked="" type="checkbox"/>
Incorporation Documents	PT10-0wXZ-39972	.....	<input checked="" type="checkbox"/>
Export CD Module	NBRB-TVIV-26463	.....	<input checked="" type="checkbox"/>
Single File Export Module	FVGI-MHWC-13724		<input type="checkbox"/>

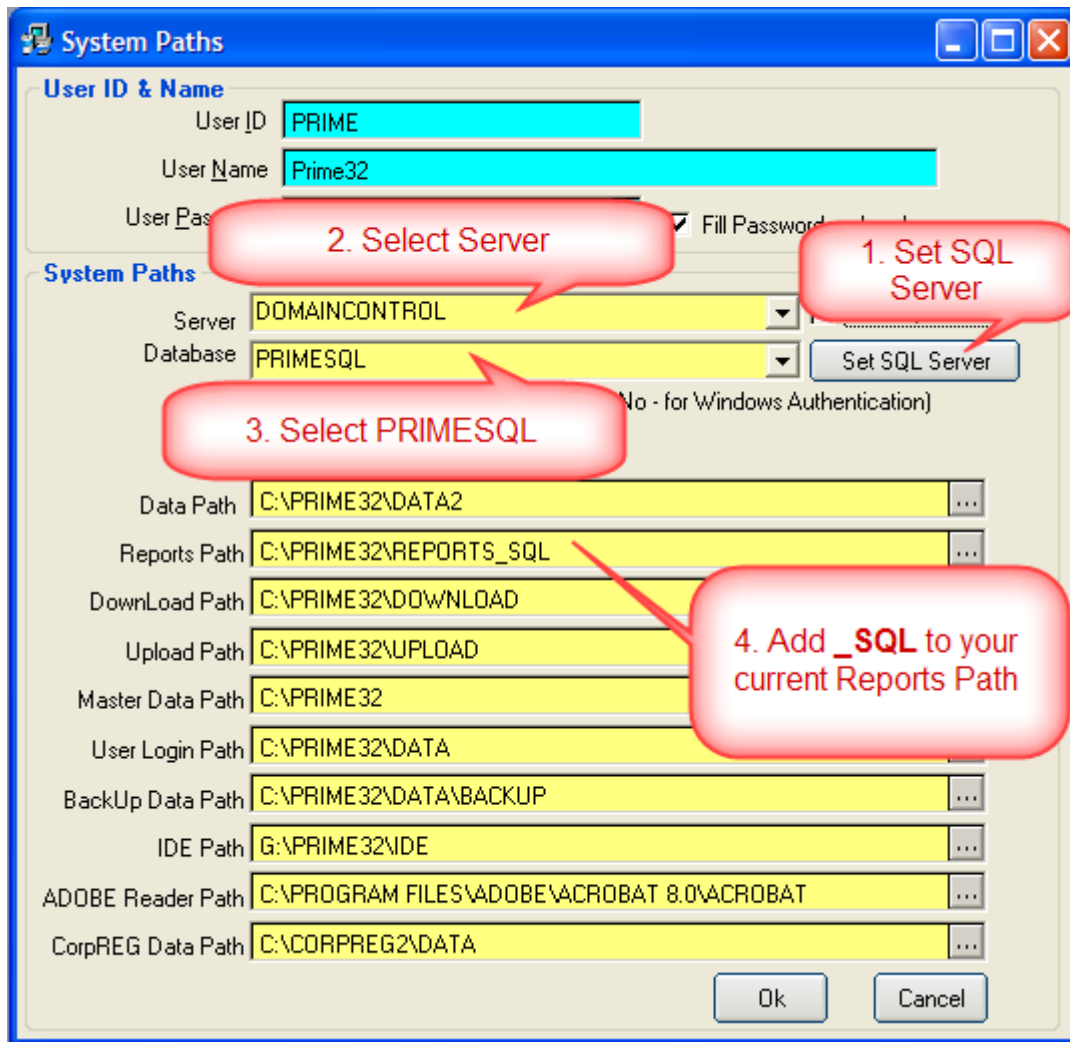
Buttons: System Paths, Ok, Cancel

KeyCode Request Details

Firm/Company Name: [text box]  
Contact Name: [text box]  
Your Fax No. (inc Area Code): [text box]

Print KeyCode Request FaxSheet

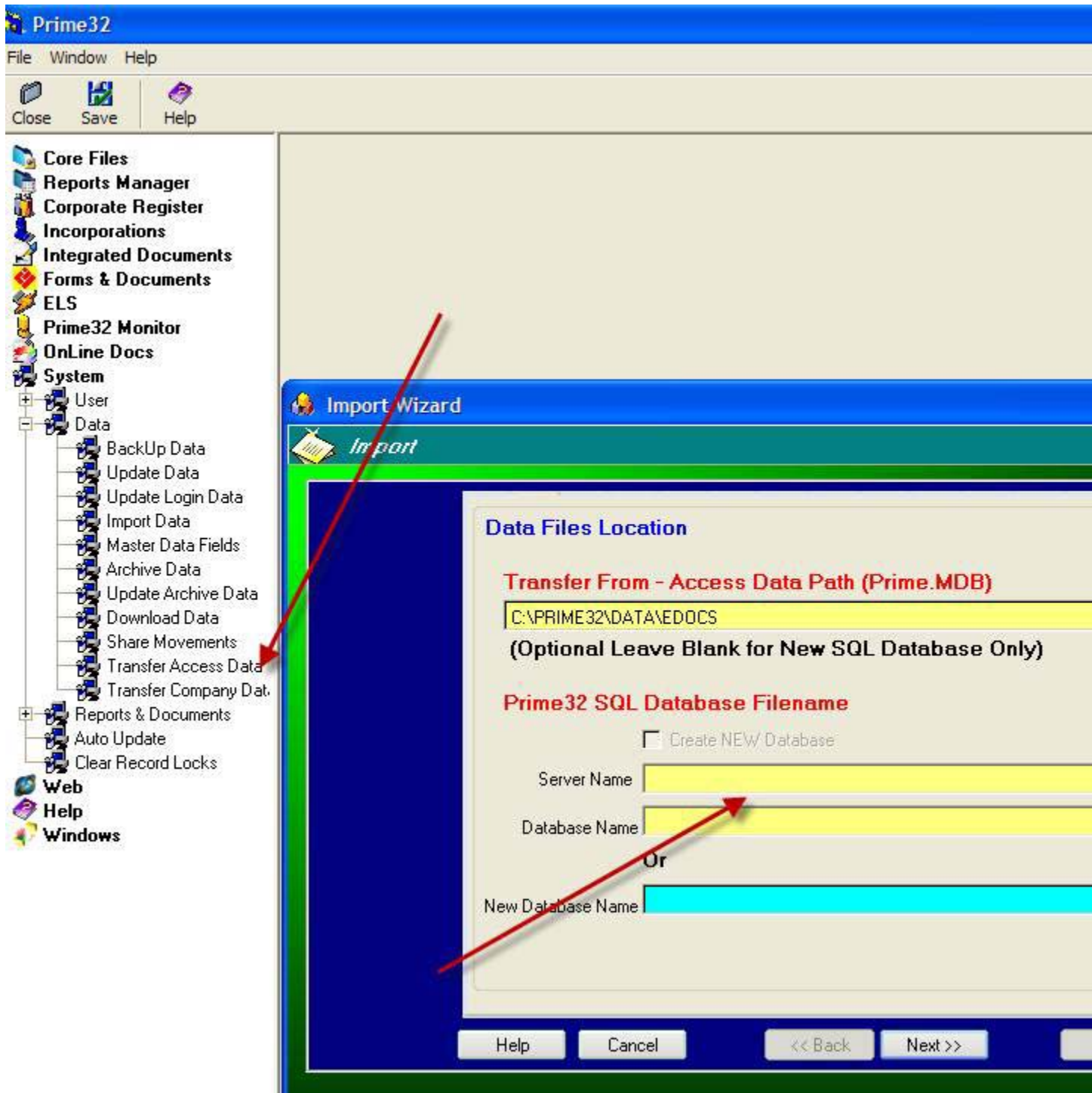
10. To set the SQL Server Settings:-



11. Push across the required SQL Server from the List then click OK.
12. Click on Server combo list and select the server
13. Click on the Database combo list and select PRIMESQL
14. At the REPORTS Path enter:  
**C:\PRIME32\REPORTS\_SQL**
15. Click Ok to accept the settings
16. Click Ok at the Key Codes Screen
17. Click Ok to Log Into Prime32SQL
18. You will be prompted to perform an Update of your Database.  
Please answer **Yes**.
19. Final step is to transfer Prime32 Data to the SQL Database.  
**(This only needs to be performed once).**

Click System from MenuTree.  
Click Data  
Click on Transfer Access Data

20. Select the ServerName and Database from the drop-down list.



21. Click Next  
Then Click Finish.

22. The Installation of Prime32SQL Version is now complete.  
Repeat Steps 3 – 16 for any additional workstations.

Kind Regards

Frank



Frank Galati  
(Managing Director)  
Prime Consulting Australia Pty Ltd

A Level 6 160 Queen Street, Melbourne VIC 3000  
P PO Box 12784 A'Beckett ST PO Melbourne VIC 8006  
T (03) 9005 4980  
F (03) 9005 4989  
E [frank@primeconsulting.com.au](mailto:frank@primeconsulting.com.au)  
W [www.primiconsulting.com.au](http://www.primiconsulting.com.au)