

The required to install the SQL version of Prime32 on a workstation are as follows:-
(Note: These are only steps for additional workstations and you must have completed the **full installation**)

As the new Prime32 software uses SQL Database the new workstation will require the necessary data drivers to access the Prime SQL database.

We recommend that you run the Microsoft Database SQL file (native SQL client) at www.primeconsulting.com.au/software/downloads/prime32/sql/sqlncli.msi

1. At the workstation please install the Prime32SQL Software from:-

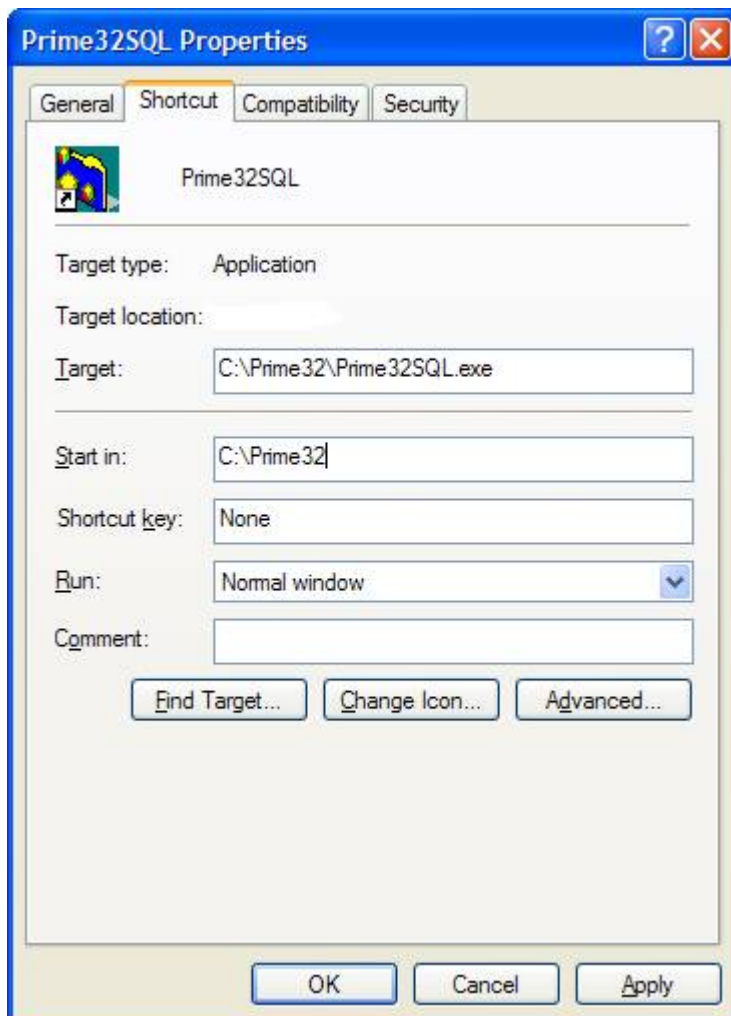
www.primeconsulting.com.au/software/downloads/prime32/install/Prime32_Installation.msi

This step will install Prime32SQL files.

2. The latest version of PrimeSQL software must also be run at:-

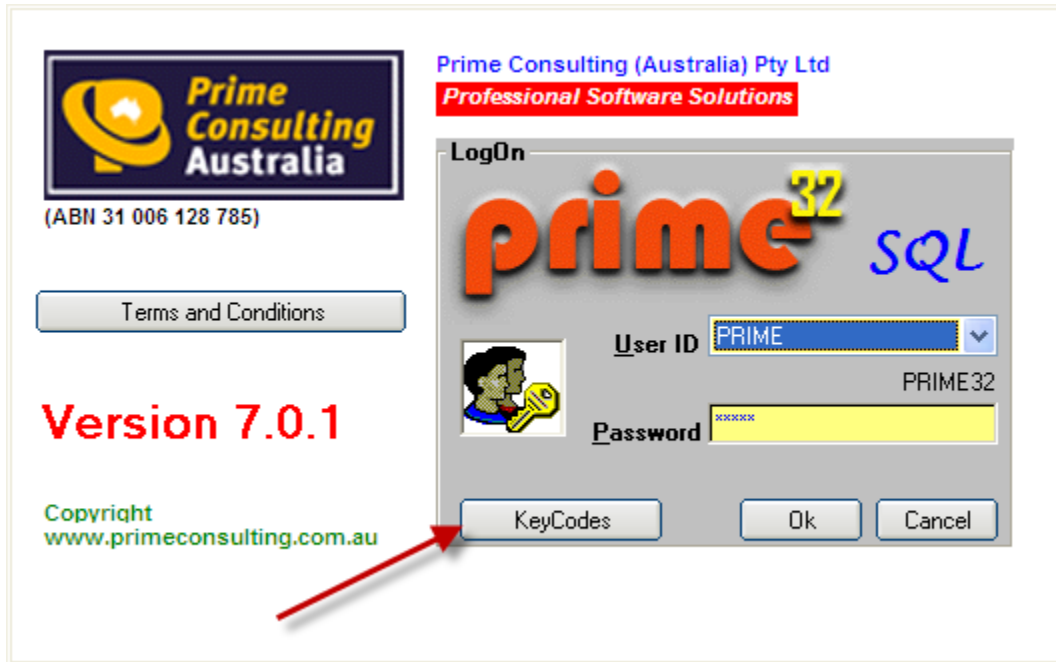
www.primeconsulting.com.au/software/downloads/Prime32_V7_Patch.msi

3. A new Prime32SQL Desktop Icon will be created.
Please ensure the properties of the icon are set to

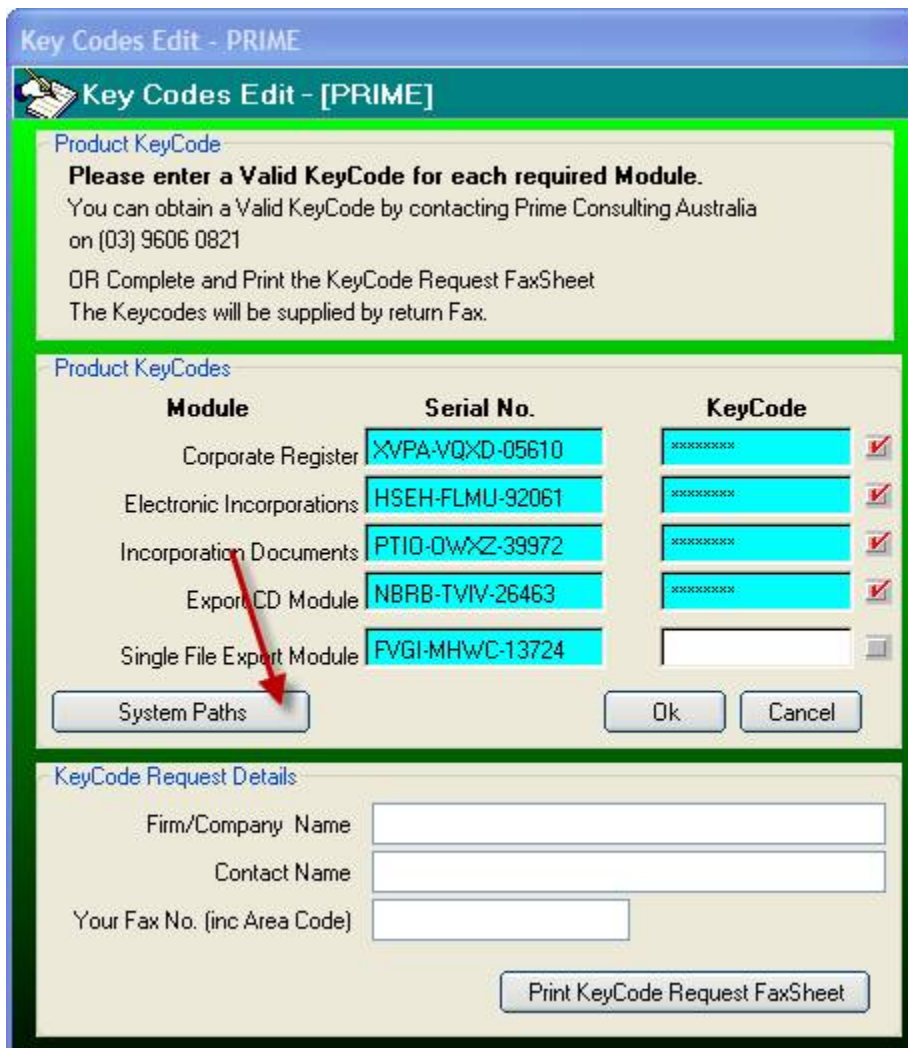


4. The next step is to set the new SQL Server settings for the workstation.

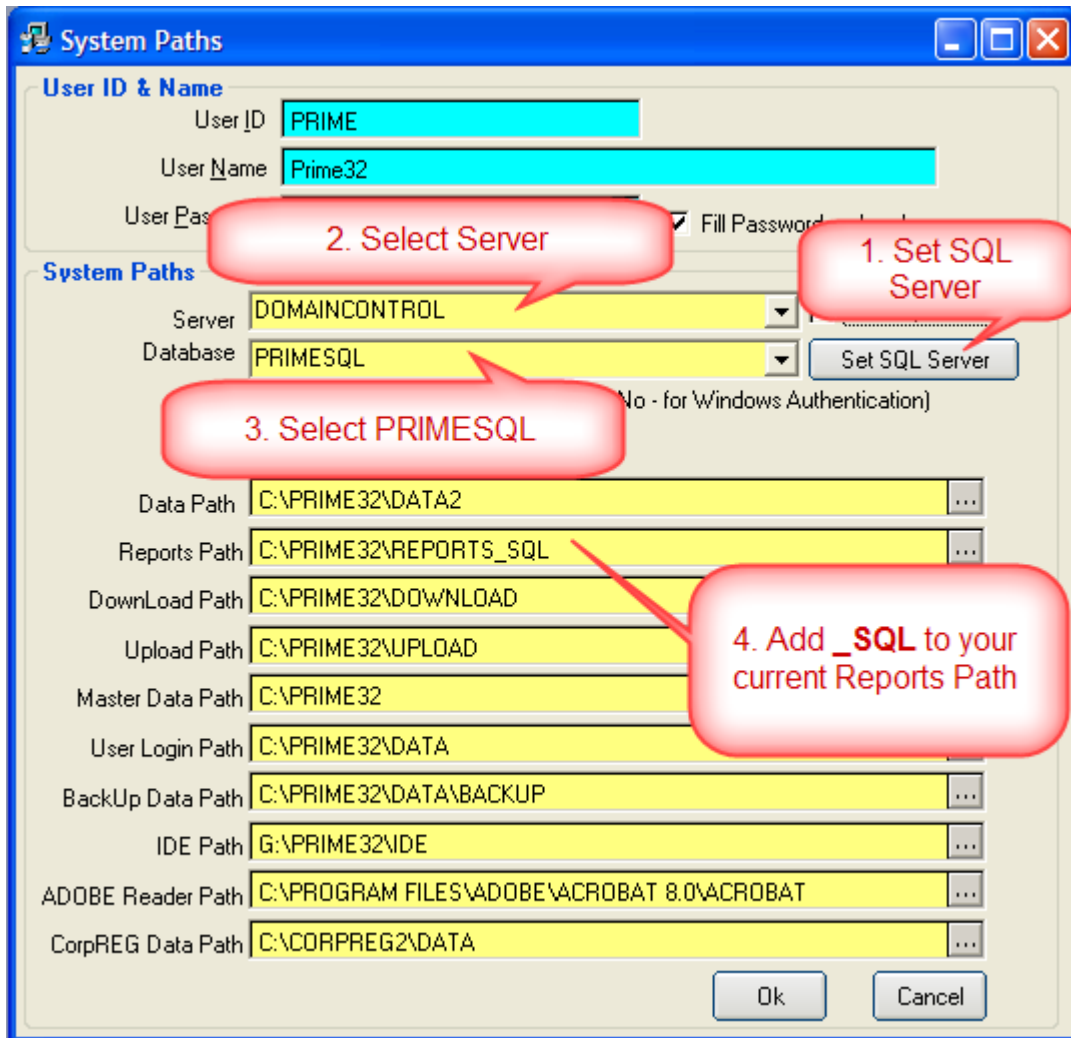
- Run Prime32SQL by double-clicking on the desktop icon. Enter your user name and password then click Keycodes button:-



- At the keycodes Window click on System Paths button:-



7. To set the SQL Server Settings:-



8. Push across the required SQL Server from the List then click OK.
9. Click on Server combo list and select the server
10. Click on the Database combo list and select PRIMESQL
11. At the REPORTS Path enter:
C:\PRIME32\REPORTS_SQL
12. Click Ok to accept the settings
13. Click Ok at the Key Codes Screen
14. Click Ok to Log Into Prime32SQL
15. The workstation Installation of Prime32SQL Version is now complete.

Kind Regards

Frank



Frank Galati
(Managing Director)
Prime Consulting Australia Pty Ltd

A Level 6 160 Queen Street, Melbourne VIC 3000
P PO Box 12784 A'Beckett ST PO Melbourne VIC 8006
T (03) 9005 4980
F (03) 9005 4989
E frank@primeconsulting.com.au
W www.primeconsulting.com.au